



GATEWAY
REGENSBURG

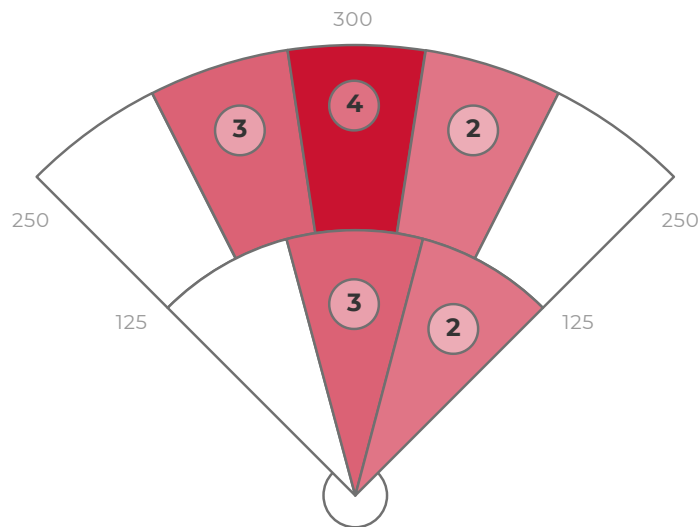
Wittmann

29.06.21

DATA

	AVG	MAX	HARD HIT AVG
EXIT VELO	83.9	93.2	91.0
L. ANGLE	7.4	23.4	18.1
DIRECTION	3.4	27.3	6.1
DISTANCE	159	295	267
SPIN RATE	2127	3561	1401

BATTING AVG	.357
XWOBA	.472
SLUGGING	.357
HARD HIT %	28.6%
BOMBS %	7.1%
ROPES %	21.4%



ZONE BREAKDOWN

Zone	Volume of Hits	AVG LA	AVG EV	AVG RPM	AVG Distance
PULL	4/14	4	83	2030	114
MIDDLE	9/14	9	84	2149	181
OPPO	1/14	10	84	2323	138

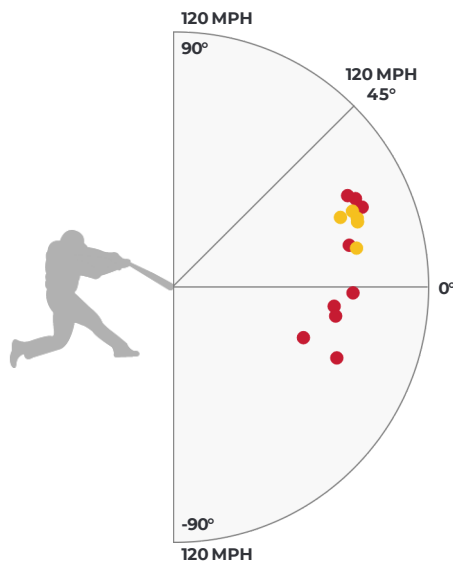
HIT OUTCOME

Single	Double	Triple	Home Run	Field Out
35.7%	0%	0%	0%	64.3%

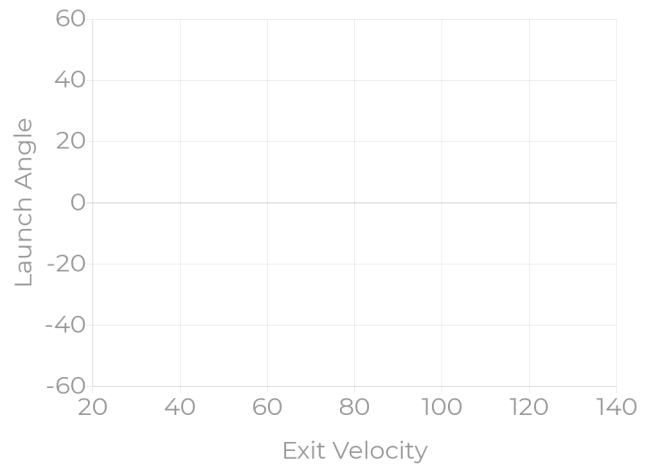
HIT CLASSIFICATIONS

Dribbler	Ground	Low Line	High Line	Fly Ball	Pop Up
0%	0%	0%	0%	0%	0%

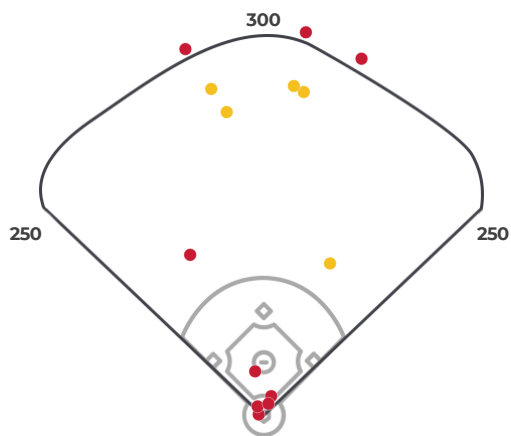
HIT OUTCOME VS LA & EV



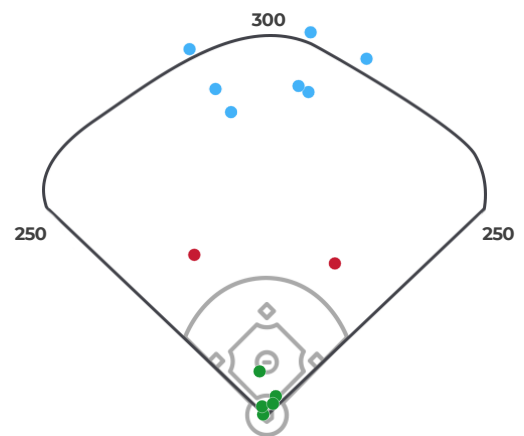
HIT CLASSIFICATIONS VS LA & EV



HIT OUTCOME



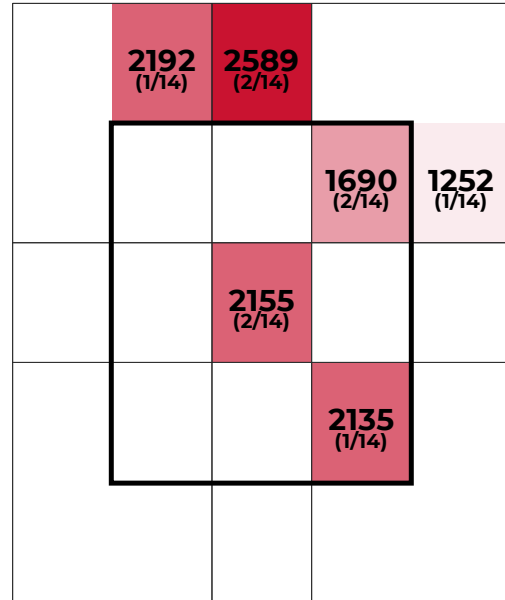
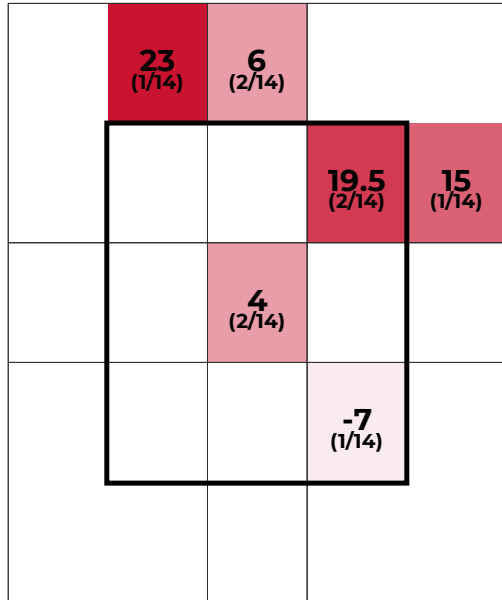
HIT CLASSIFICATIONS



STRIKE ZONE BREAKDOWN

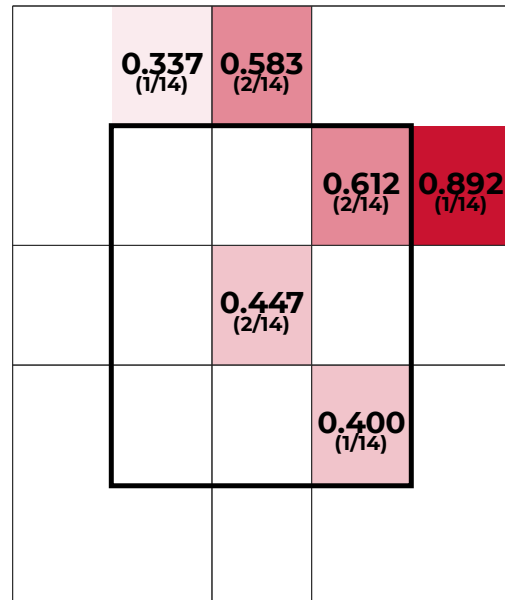
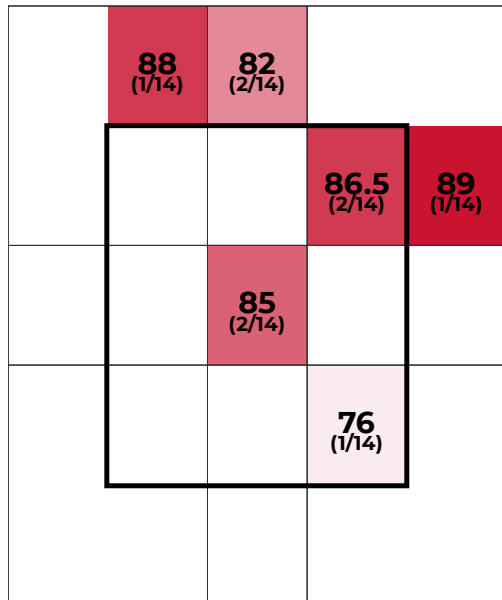
LAUNCH ANGLE

SPIN RATE



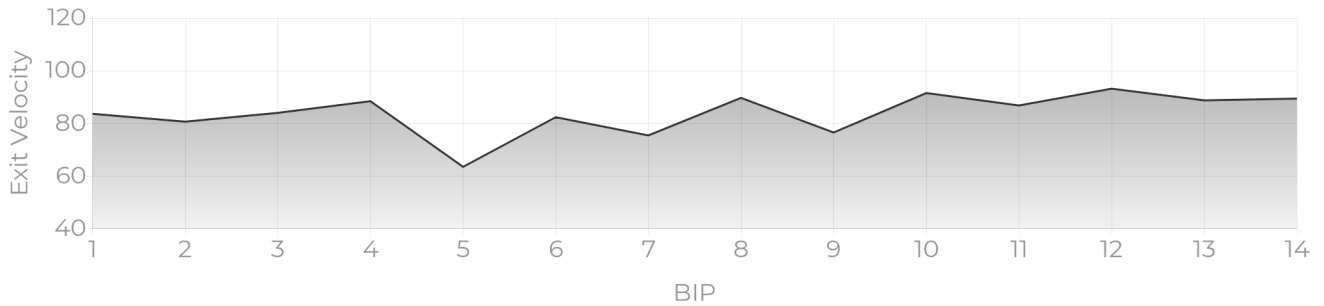
EXIT VELOCITY

XWOBA

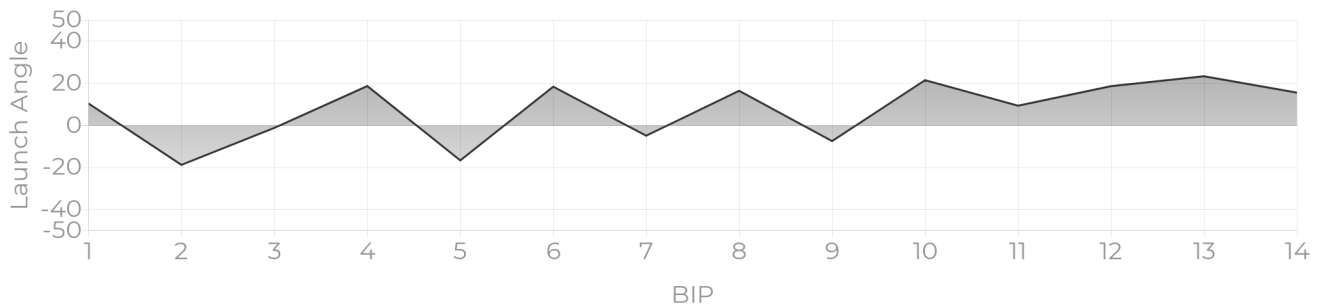


PROGRESS REPORTS

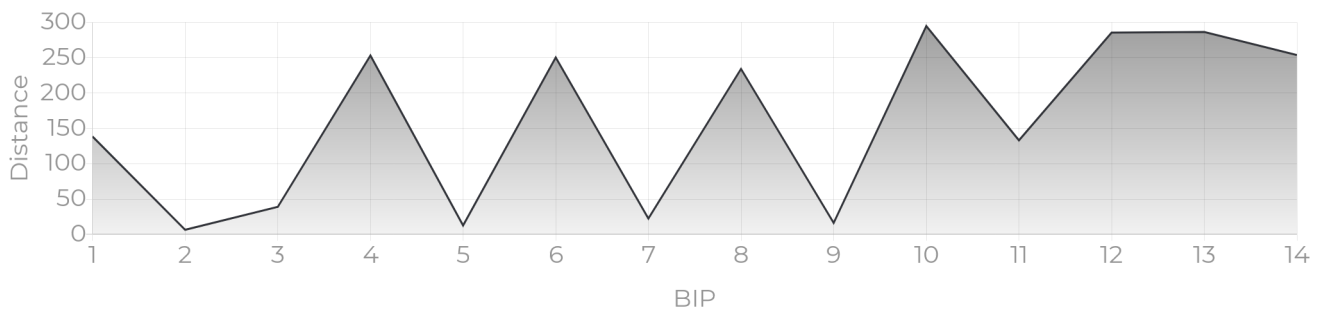
EV TRACKER



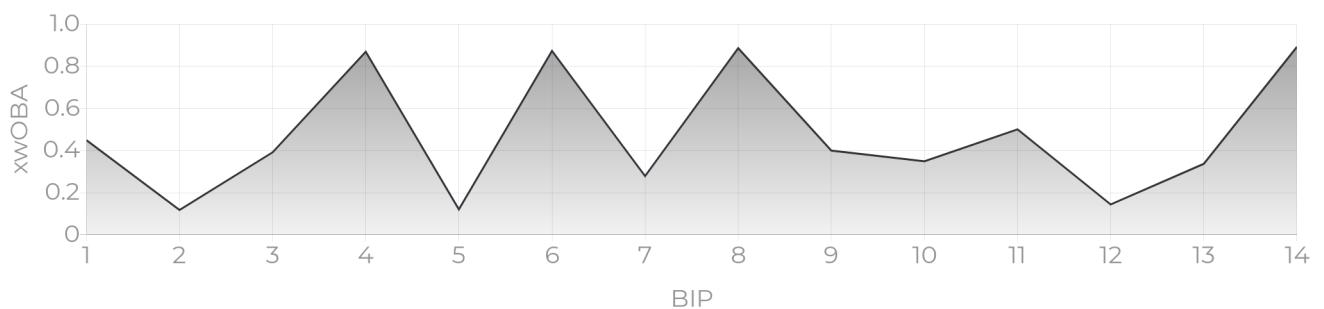
LA TRACKER



DISTANCE TRACKER



XWOBA TRACKER



XWOBA

Expected Weighted On Base Average is a term commonly used inside of the MLB taking Launch Angle and Exit Velocity to determine the Expected OBA and often compared to the Actual OBA. This provides a tool for Rapsodo to provide an instant analysis off of each BBE (Batted Ball Event). In the same way that each batted ball is assigned a Hit Classification, every batted ball has been given a single, double, triple and home run probability based on the results of comparable batted balls from MLB data — in terms of similar exit velocity and launch angle.

BIP (BALLS IN PLAY)

Any ball hit within a range of -45 to 45 degree Exit Direction.

HARD HIT %

Any ball hit within 10% of a player's Max Exit Velo.

ROPES

Any Hard Hit Ball (within 10% of a player's Max Exit Velo) and hit between 10 and 20 degree Launch Angle.

BOMBS

Any Hard Hit Ball (within 10% of a player's Max Exit Velo) and Hit with a 20+ Launch Angle.

HIT CLASSIFICATIONS

- Dribbler:** A batted ball event with less than a 0 degree launch angle
- Ground Ball:** A batted ball event with a launch angle between 0 and 6 degrees
- Low Line Drive:** A batted ball event with a launch angle between 6 and 15 degrees
- High Line Drive:** A batted ball event with a launch angle between 15 and 24 degrees
- Fly Ball:** A batted ball event with a launch angle between 24 and 50 degrees
- Pop Up:** A batted ball event with a launch angle greater than 50 degrees