



GATEWAY
REGENSBURG

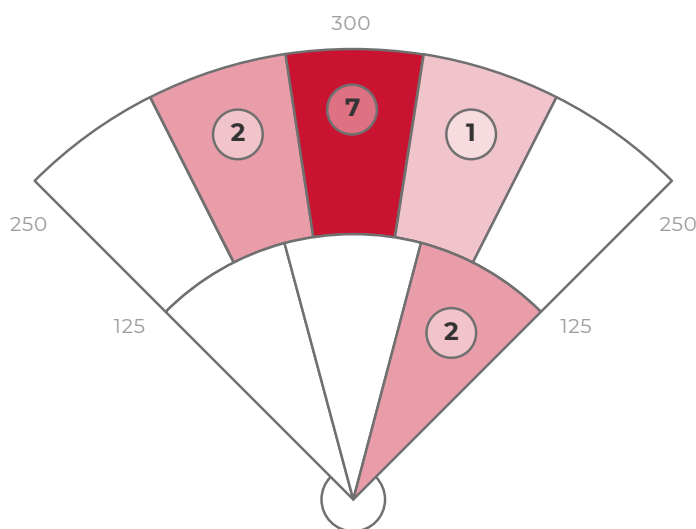
Sanchez

29.06.21

DATA

| | AVG | MAX | HARD HIT AVG |
|-----------|------|------|--------------|
| EXIT VELO | 84.5 | 88.9 | 0 |
| L. ANGLE | 17.6 | 33.8 | 0 |
| DIRECTION | 1.4 | 21.9 | 0 |
| DISTANCE | 215 | 311 | 0 |
| SPIN RATE | 1675 | 3552 | 0 |

| | |
|-------------|------|
| BATTING AVG | .500 |
| XWOBA | .463 |
| SLUGGING | .500 |
| HARD HIT % | 0% |
| BOMBS % | 0% |
| ROPES % | 0% |



ZONE BREAKDOWN

| Zone | Volume of Hits | AVG LA | AVG EV | AVG RPM | AVG Distance |
|--------|----------------|--------|--------|---------|--------------|
| PULL | 3/12 | 6 | 84 | 1839 | 132 |
| MIDDLE | 8/12 | 22 | 85 | 1494 | 247 |
| OPPO | 1/12 | 18 | 85 | 2628 | 205 |

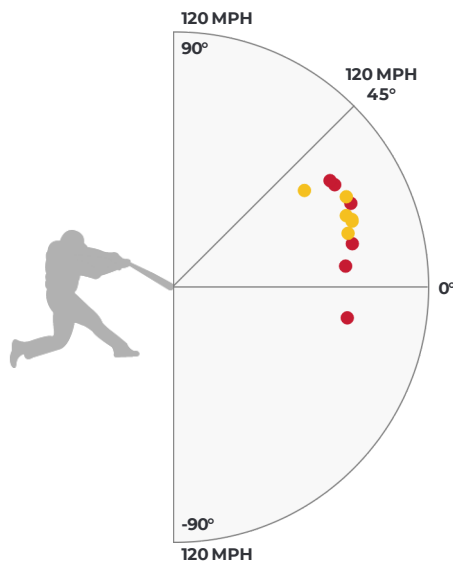
HIT OUTCOME

| Single | Double | Triple | Home Run | Field Out |
|--------|--------|--------|----------|-----------|
| 50.0% | 0% | 0% | 0% | 50.0% |

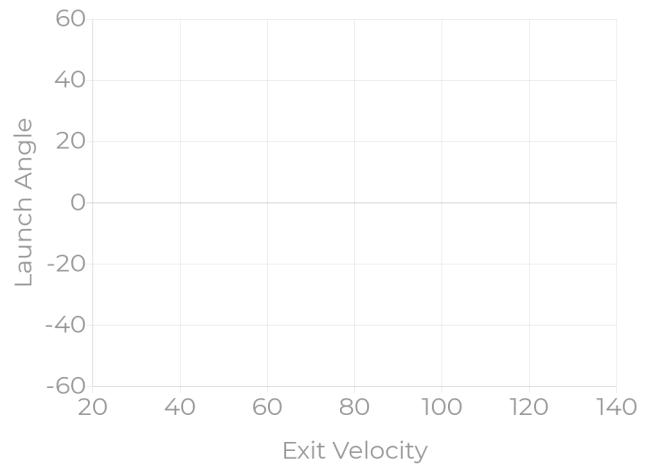
HIT CLASSIFICATIONS

| Dribbler | Ground | Low Line | High Line | Fly Ball | Pop Up |
|----------|--------|----------|-----------|----------|--------|
| 0% | 0% | 0% | 0% | 0% | 0% |

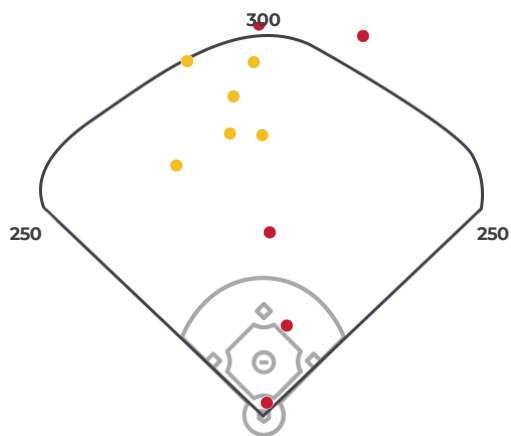
HIT OUTCOME VS LA & EV



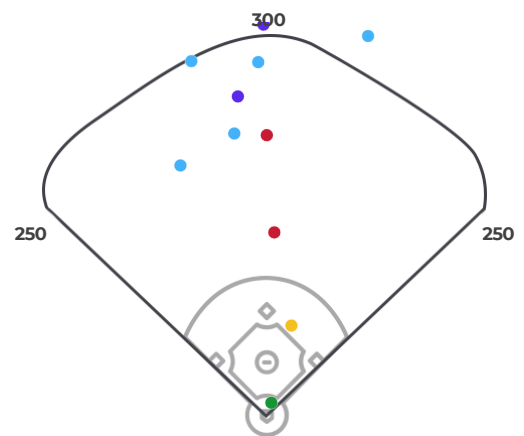
HIT CLASSIFICATIONS VS LA & EV



HIT OUTCOME



HIT CLASSIFICATIONS



STRIKE ZONE BREAKDOWN

LAUNCH ANGLE

SPIN RATE

| | | | |
|--------------|--------------|---------------|--------------|
| 10 (1/12) | 18 (1/12) | 33 (1/12) | |
| | 28 (1/12) | 30 (1/12) | 16 (1/12) |
| | | 4.5 (2/12) | |
| | | 5 (1/12) | 13 (1/12) |

| | | | |
|---------------|----------------|----------------|----------------|
| 654 (1/12) | 2628 (1/12) | 2789 (1/12) | |
| | 1202 (1/12) | 395 (1/12) | 2296 (1/12) |
| | | 2385 (2/12) | |
| | | 1292 (1/12) | 1782 (1/12) |

EXIT VELOCITY

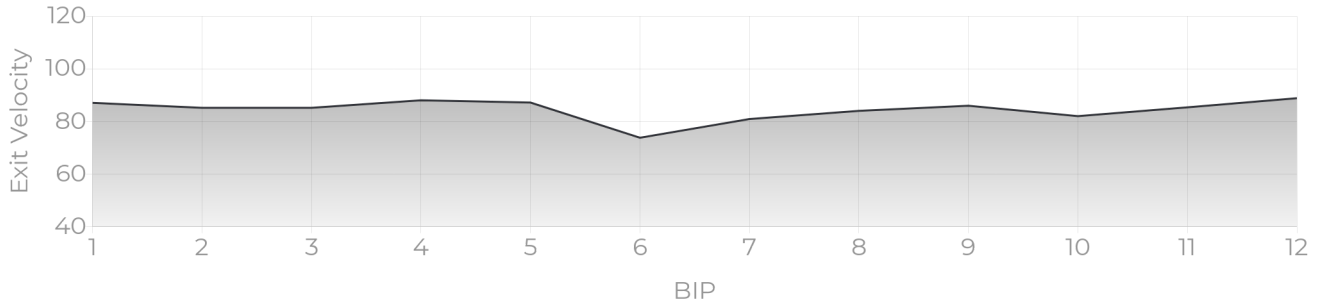
XWOBA

| | | | |
|--------------|--------------|----------------|--------------|
| 85 (1/12) | 85 (1/12) | 73 (1/12) | |
| | 86 (1/12) | 85 (1/12) | 87 (1/12) |
| | | 84.5 (2/12) | |
| | | 81 (1/12) | 84 (1/12) |

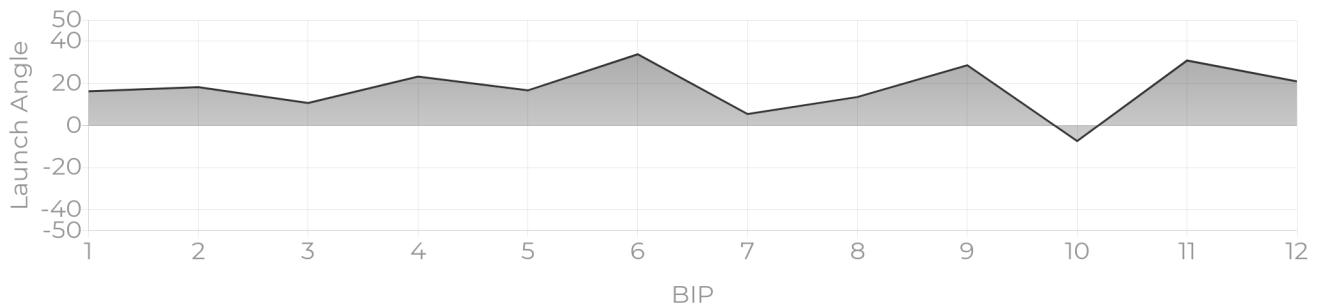
| | | | |
|-----------------|-----------------|-----------------|-----------------|
| 0.443 (1/12) | 0.873 (1/12) | 0.593 (1/12) | |
| | 0.004 (1/12) | 0.006 (1/12) | 0.796 (1/12) |
| | | 0.527 (2/12) | |
| | | 0.230 (1/12) | 0.878 (1/12) |

PROGRESS REPORTS

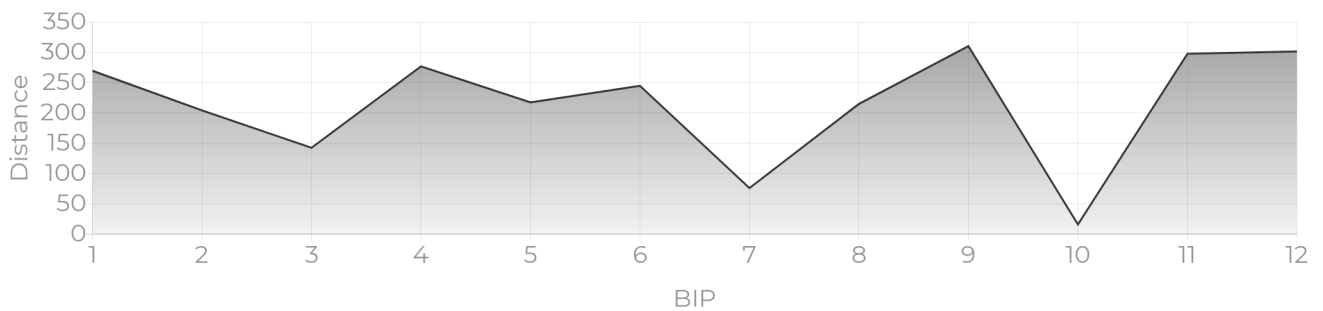
EV TRACKER



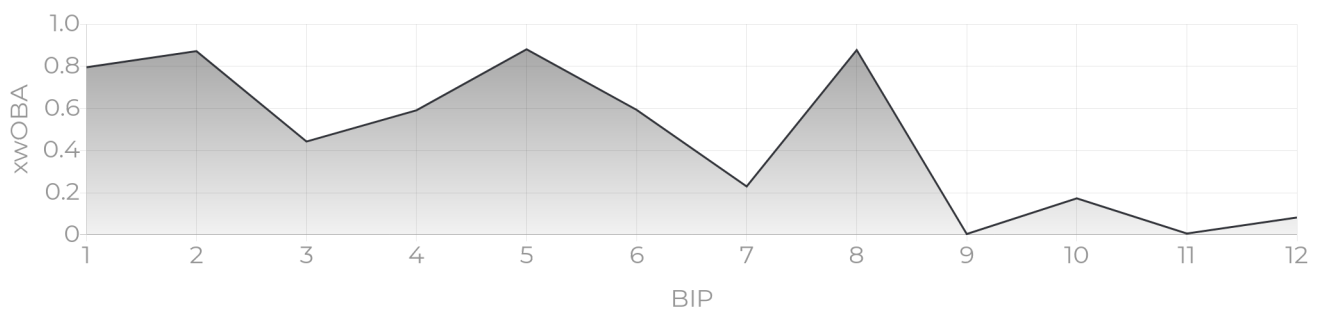
LA TRACKER



DISTANCE TRACKER



XWOBA TRACKER



XWOBA

Expected Weighted On Base Average is a term commonly used inside of the MLB taking Launch Angle and Exit Velocity to determine the Expected OBA and often compared to the Actual OBA. This provides a tool for Rapsodo to provide an instant analysis off of each BBE (Batted Ball Event). In the same way that each batted ball is assigned a Hit Classification, every batted ball has been given a single, double, triple and home run probability based on the results of comparable batted balls from MLB data — in terms of similar exit velocity and launch angle.

BIP (BALLS IN PLAY)

Any ball hit within a range of -45 to 45 degree Exit Direction.

HARD HIT %

Any ball hit within 10% of a player's Max Exit Velo.

ROPES

Any Hard Hit Ball (within 10% of a player's Max Exit Velo) and hit between 10 and 20 degree Launch Angle.

BOMBS

Any Hard Hit Ball (within 10% of a player's Max Exit Velo) and Hit with a 20+ Launch Angle.

HIT CLASSIFICATIONS

Dribbler: A batted ball event with less than a 0 degree launch angle

Ground Ball: A batted ball event with a launch angle between 0 and 6 degrees

Low Line Drive: A batted ball event with a launch angle between 6 and 15 degrees

High Line Drive: A batted ball event with a launch angle between 15 and 24 degrees

Fly Ball: A batted ball event with a launch angle between 24 and 50 degrees

Pop Up: A batted ball event with a launch angle greater than 50 degrees