



GATEWAY  
REGENSBURG

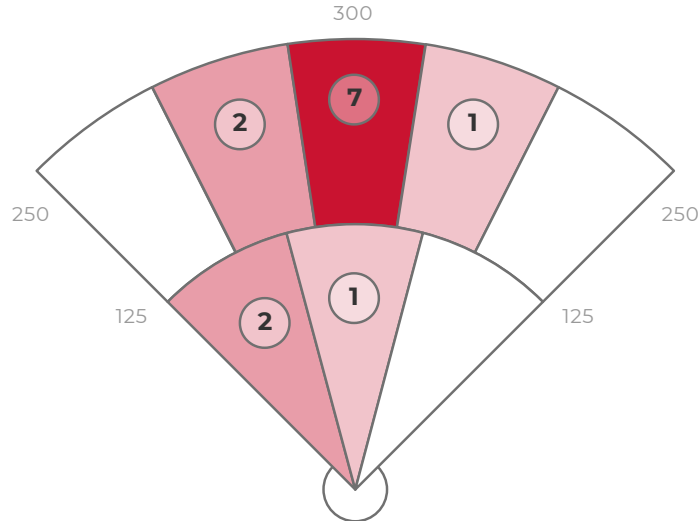
# Musoni

## 29.06.21

### DATA

	AVG	MAX	HARD HIT AVG
EXIT VELO	81.3	86.8	0
L. ANGLE	16.6	33.9	0
DIRECTION	-6.1	9.4	0
DISTANCE	204	306	0
SPIN RATE	1246	3041	0

BATTING AVG	.462
XWOBA	.425
SLUGGING	.462
HARD HIT %	0%
BOMBS %	0%
ROPES %	0%



### ZONE BREAKDOWN

Zone	Volume of Hits	AVG LA	AVG EV	AVG RPM	AVG Distance
PULL	0/13	-	-	-	-
MIDDLE	10/13	19	83	1181	228
OPPO	3/13	8	77	1465	126

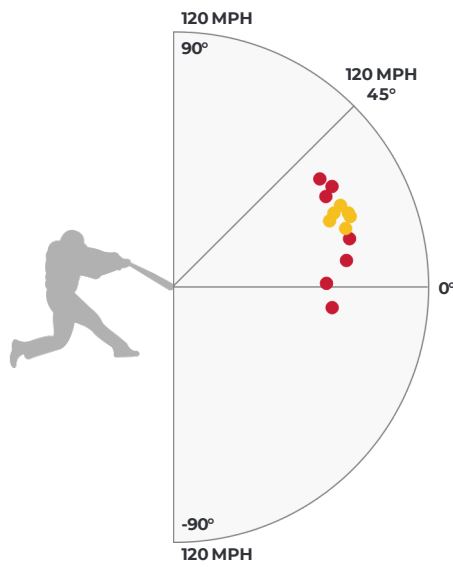
HIT OUTCOME

Single	Double	Triple	Home Run	Field Out
46.2%	0%	0%	0%	53.8%

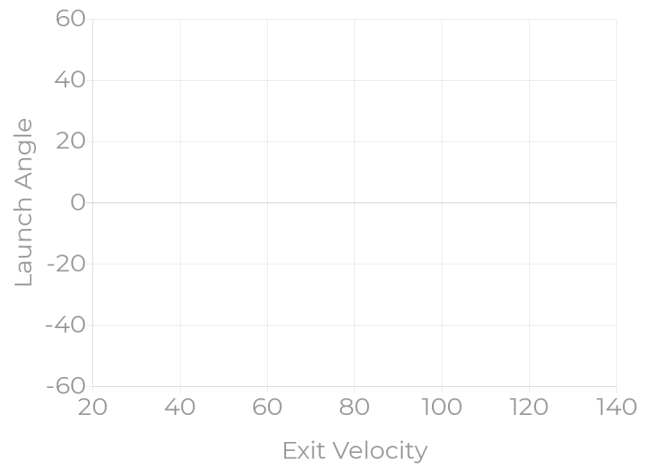
HIT CLASSIFICATIONS

Dribbler	Ground	Low Line	High Line	Fly Ball	Pop Up
0%	0%	0%	0%	0%	0%

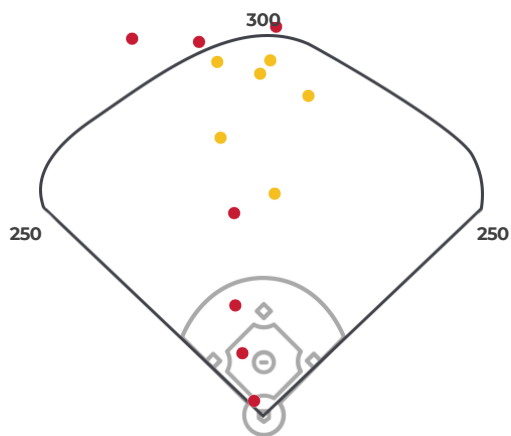
HIT OUTCOME VS LA & EV



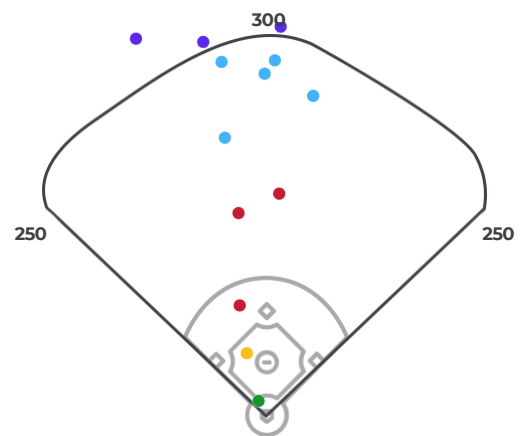
HIT CLASSIFICATIONS VS LA & EV



HIT OUTCOME



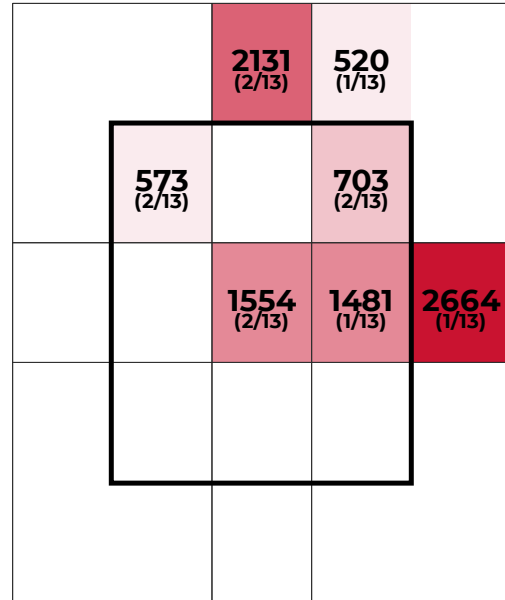
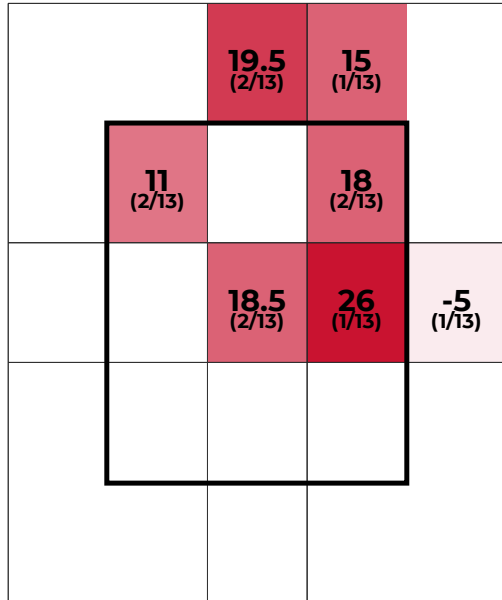
HIT CLASSIFICATIONS



STRIKE ZONE BREAKDOWN

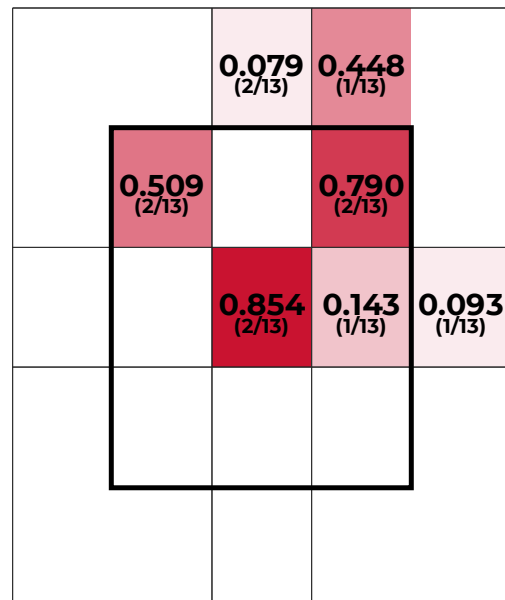
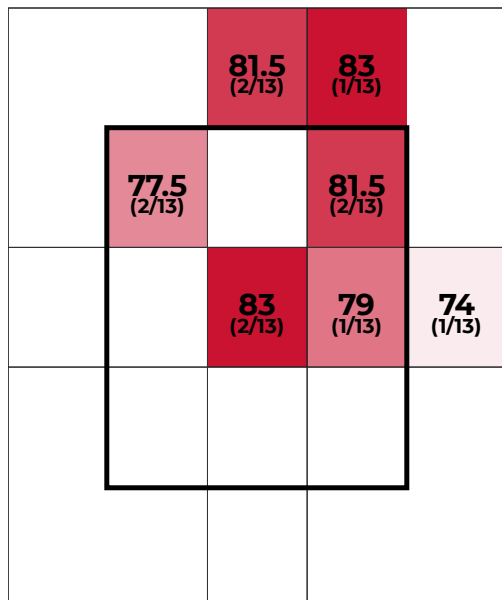
LAUNCH ANGLE

SPIN RATE



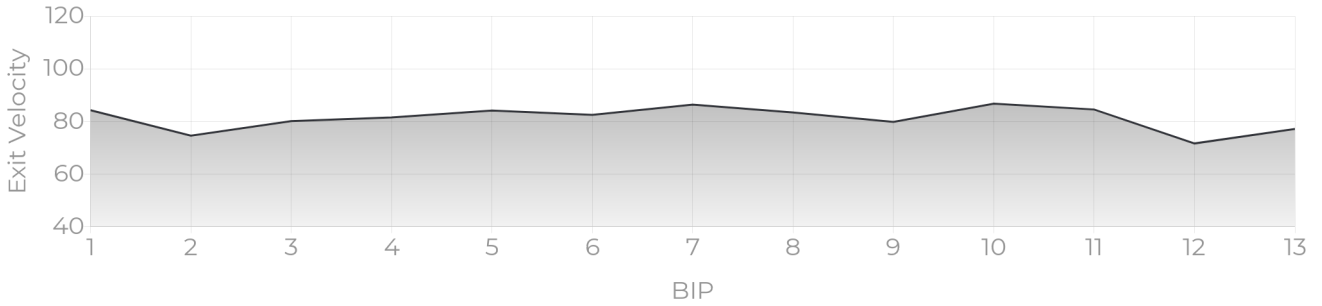
EXIT VELOCITY

XWOBA

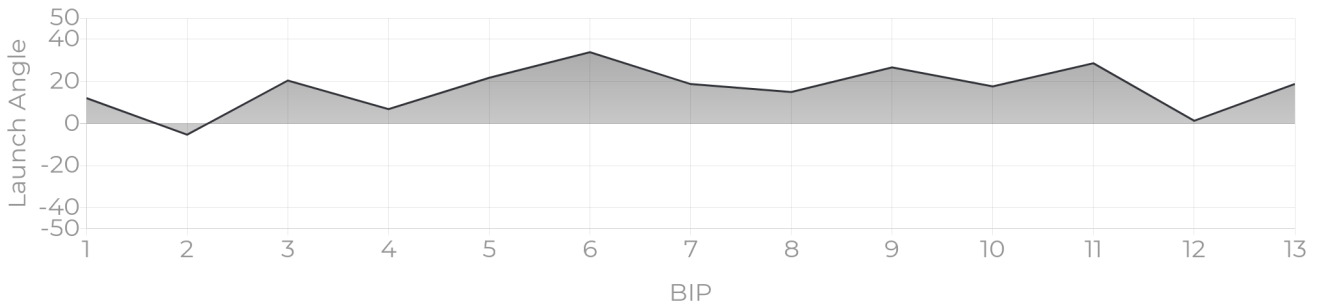


**PROGRESS REPORTS**

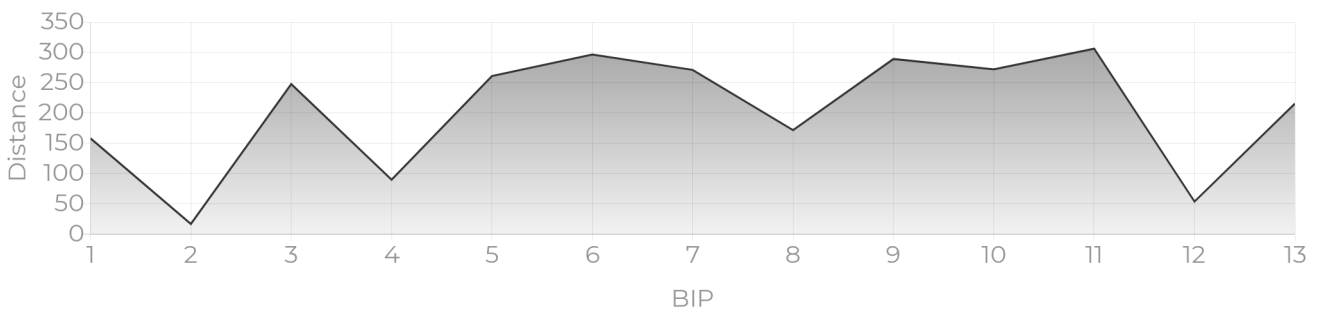
**EV TRACKER**



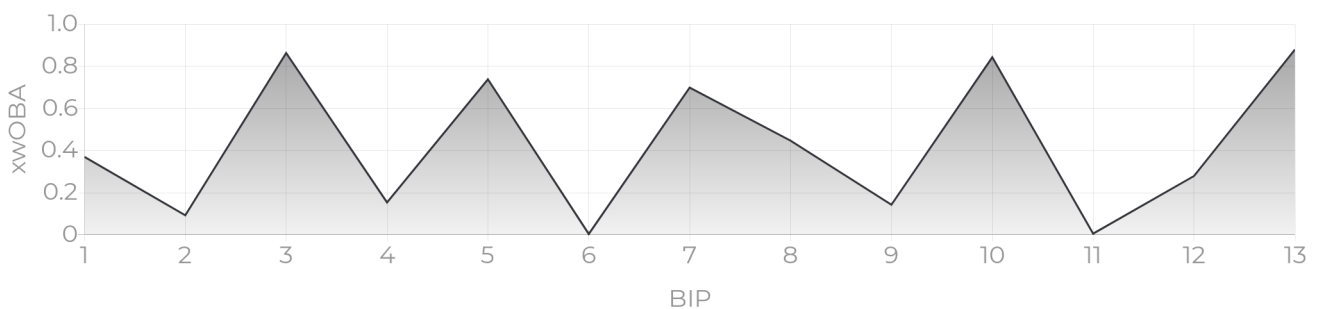
**LA TRACKER**



**DISTANCE TRACKER**



**XWOBA TRACKER**



## XWOBA

---

Expected Weighted On Base Average is a term commonly used inside of the MLB taking Launch Angle and Exit Velocity to determine the Expected OBA and often compared to the Actual OBA. This provides a tool for Rapsodo to provide an instant analysis off of each BBE (Batted Ball Event). In the same way that each batted ball is assigned a Hit Classification, every batted ball has been given a single, double, triple and home run probability based on the results of comparable batted balls from MLB data — in terms of similar exit velocity and launch angle.

## BIP (BALLS IN PLAY)

---

Any ball hit within a range of -45 to 45 degree Exit Direction.

## HARD HIT %

---

Any ball hit within 10% of a player's Max Exit Velo.

## ROPES

---

Any Hard Hit Ball (within 10% of a player's Max Exit Velo) and hit between 10 and 20 degree Launch Angle.

## BOMBS

---

Any Hard Hit Ball (within 10% of a player's Max Exit Velo) and Hit with a 20+ Launch Angle.

## HIT CLASSIFICATIONS

---

**Dribbler:** A batted ball event with less than a 0 degree launch angle

**Ground Ball:** A batted ball event with a launch angle between 0 and 6 degrees

**Low Line Drive:** A batted ball event with a launch angle between 6 and 15 degrees

**High Line Drive:** A batted ball event with a launch angle between 15 and 24 degrees

**Fly Ball:** A batted ball event with a launch angle between 24 and 50 degrees

**Pop Up:** A batted ball event with a launch angle greater than 50 degrees