



GATEWAY  
REGENSBURG

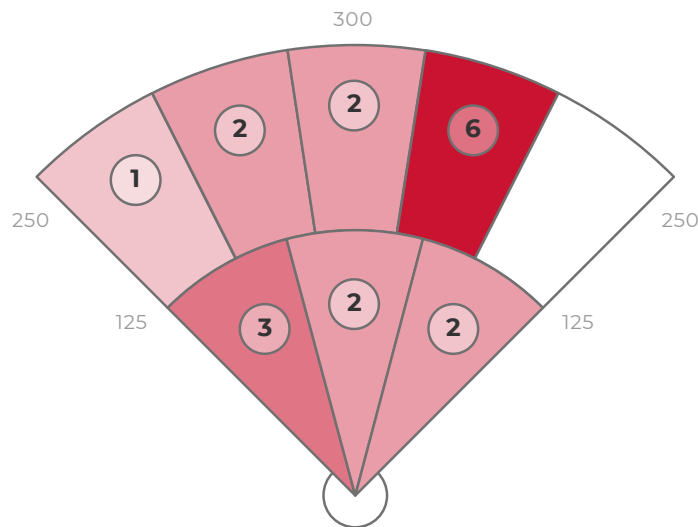
# Harder

## 29.07.21

DATA

	AVG	MAX	HARD HIT AVG
EXIT VELO	73.5	89.0	89.0
L. ANGLE	16.5	42.5	25.2
DIRECTION	-0.9	29.0	12.0
DISTANCE	165	331	331
SPIN RATE	1532	3588	925

BATTING AVG	.222
XWOBA	.296
SLUGGING	.222
HARD HIT %	5.6%
BOMBS %	5.6%
ROPES %	0%



ZONE BREAKDOWN

Zone	Volume of Hits	AVG LA	AVG EV	AVG RPM	AVG Distance
PULL	4/18	9	73	1957	127
MIDDLE	9/18	23	76	1047	209
OPPO	5/18	11	69	2065	116

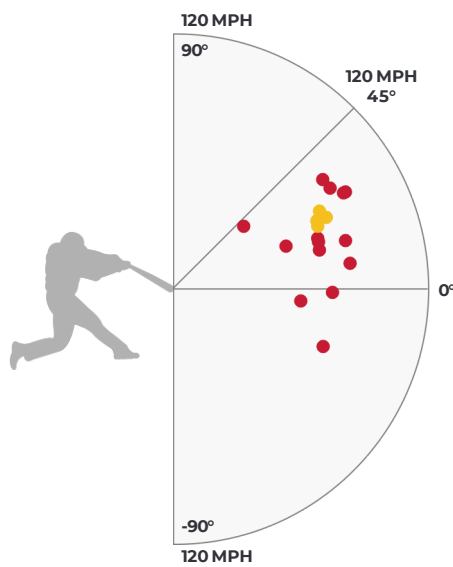
HIT OUTCOME

Single	Double	Triple	Home Run	Field Out
22.2%	0%	0%	0%	77.8%

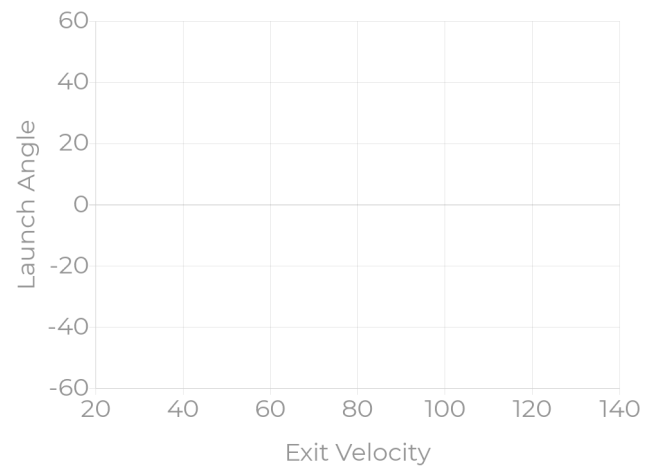
HIT CLASSIFICATIONS

Dribbler	Ground	Low Line	High Line	Fly Ball	Pop Up
0%	0%	0%	0%	0%	0%

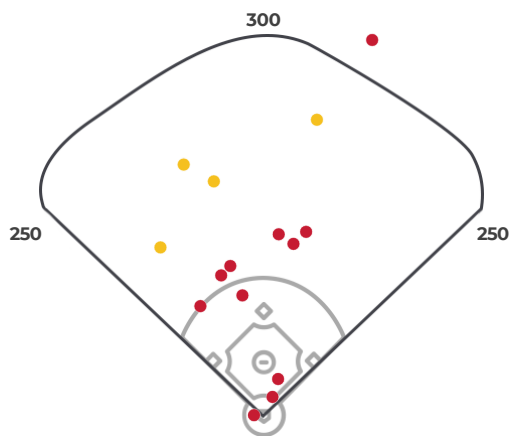
HIT OUTCOME VS LA & EV



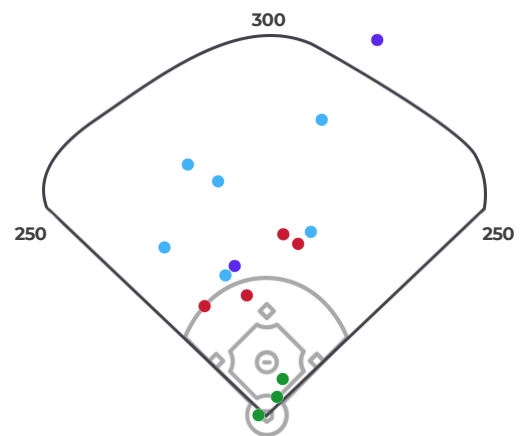
HIT CLASSIFICATIONS VS LA & EV



HIT OUTCOME



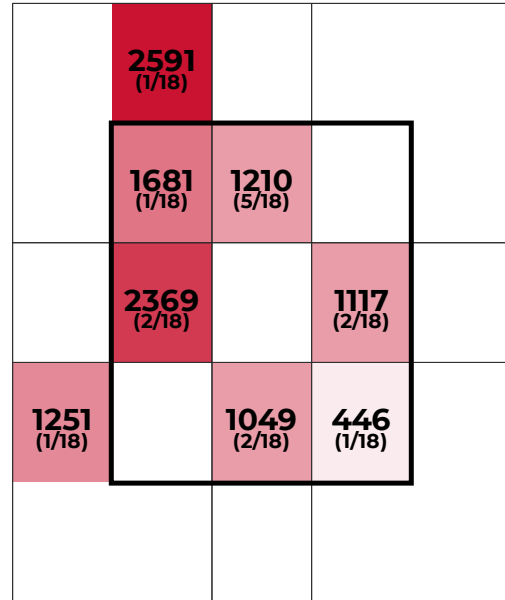
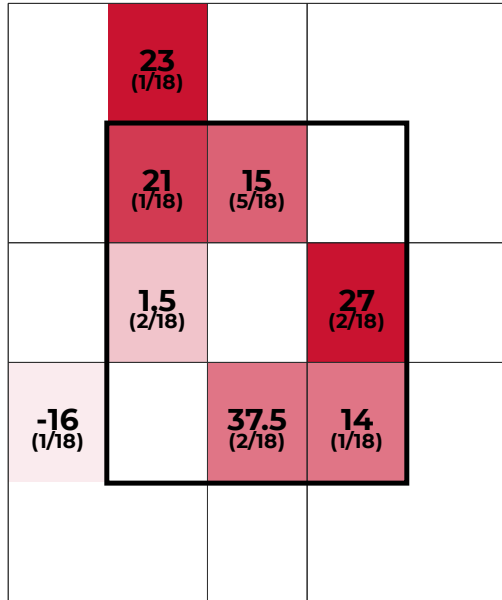
HIT CLASSIFICATIONS



STRIKE ZONE BREAKDOWN

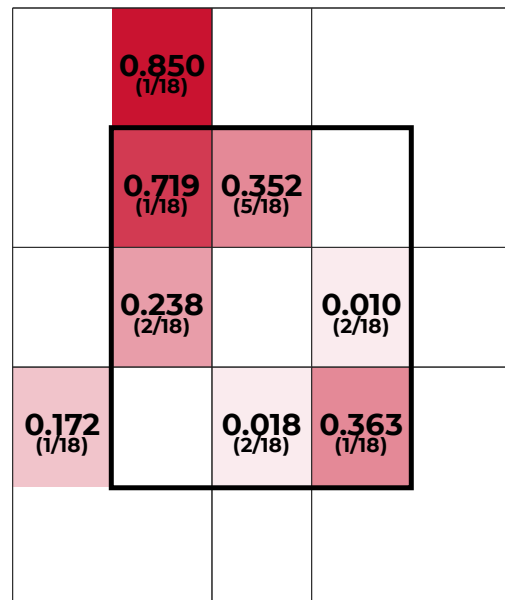
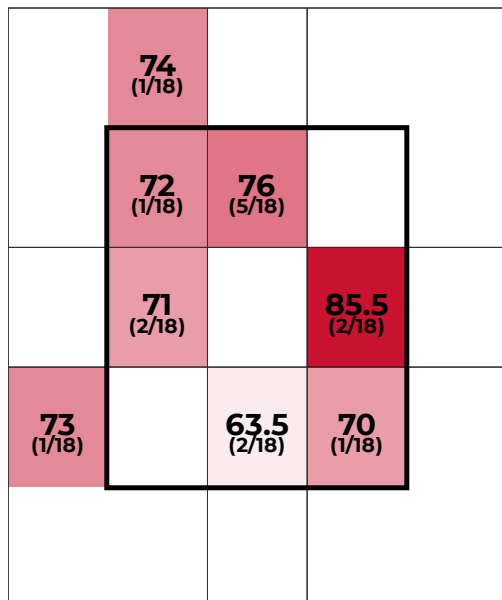
LAUNCH ANGLE

SPIN RATE



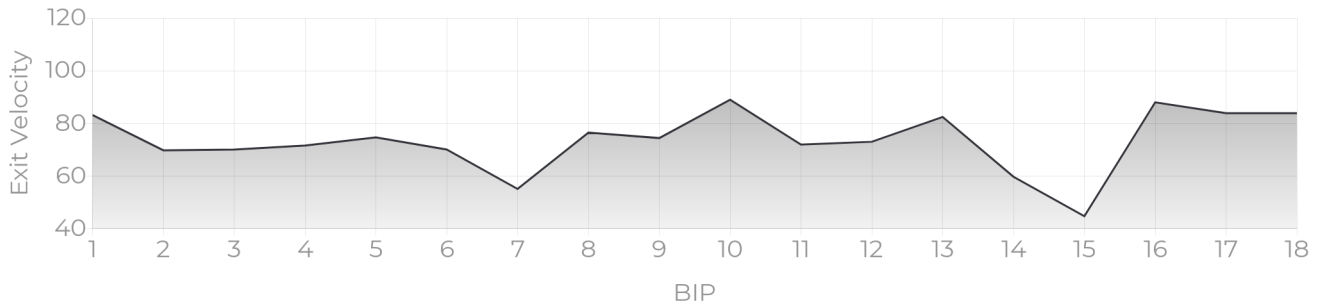
EXIT VELOCITY

XWOBA

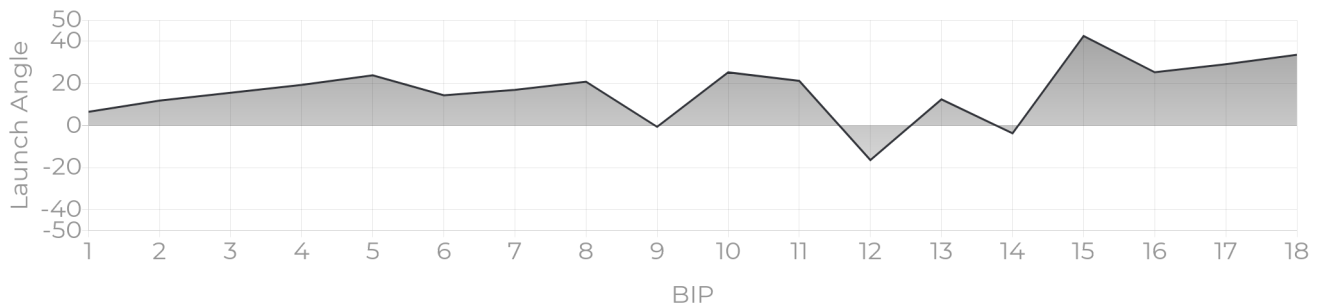


**PROGRESS REPORTS**

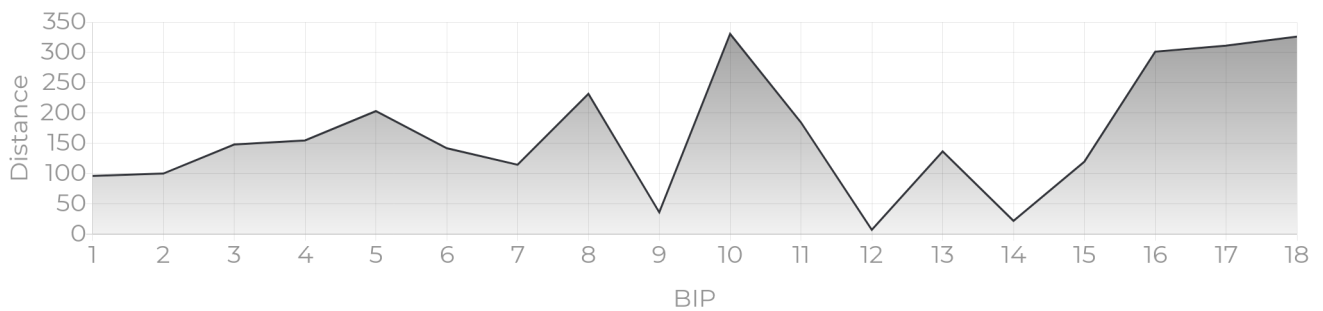
**EV TRACKER**



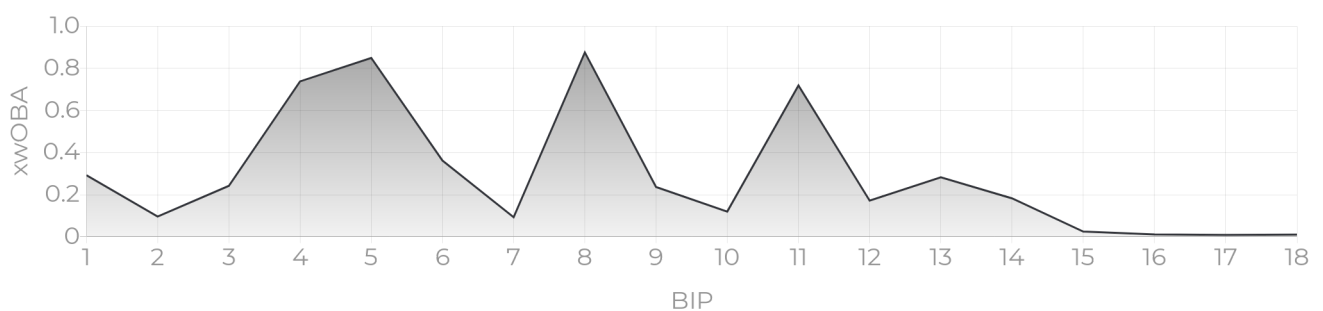
**LA TRACKER**



**DISTANCE TRACKER**



**XWOBA TRACKER**



## XWOBA

---

Expected Weighted On Base Average is a term commonly used inside of the MLB taking Launch Angle and Exit Velocity to determine the Expected OBA and often compared to the Actual OBA. This provides a tool for Rapsodo to provide an instant analysis off of each BBE (Batted Ball Event). In the same way that each batted ball is assigned a Hit Classification, every batted ball has been given a single, double, triple and home run probability based on the results of comparable batted balls from MLB data — in terms of similar exit velocity and launch angle.

## BIP (BALLS IN PLAY)

---

Any ball hit within a range of -45 to 45 degree Exit Direction.

## HARD HIT %

---

Any ball hit within 10% of a player's Max Exit Velo.

## ROPES

---

Any Hard Hit Ball (within 10% of a player's Max Exit Velo) and hit between 10 and 20 degree Launch Angle.

## BOMBS

---

Any Hard Hit Ball (within 10% of a player's Max Exit Velo) and Hit with a 20+ Launch Angle.

## HIT CLASSIFICATIONS

---

- Dribbler:** A batted ball event with less than a 0 degree launch angle
- Ground Ball:** A batted ball event with a launch angle between 0 and 6 degrees
- Low Line Drive:** A batted ball event with a launch angle between 6 and 15 degrees
- High Line Drive:** A batted ball event with a launch angle between 15 and 24 degrees
- Fly Ball:** A batted ball event with a launch angle between 24 and 50 degrees
- Pop Up:** A batted ball event with a launch angle greater than 50 degrees