



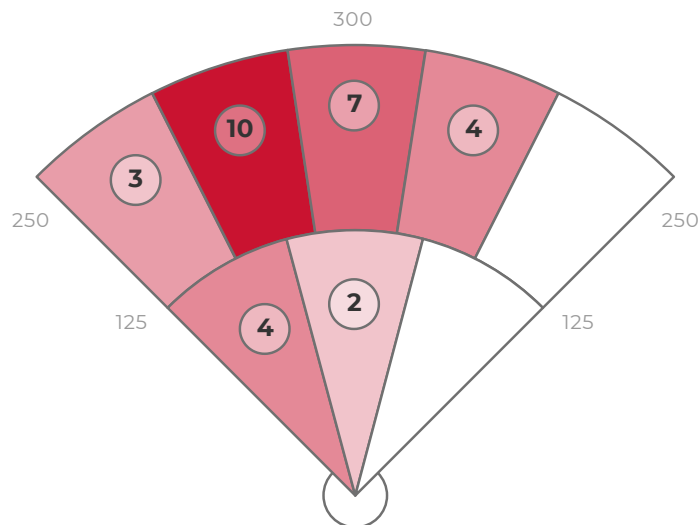
GATEWAY
REGENSBURG

Robberse 01.07.21

DATA

	AVG	MAX	HARD HIT AVG
EXIT VELO	78.3	90.4	89.9
L. ANGLE	19.1	45.7	17.0
DIRECTION	-10.0	52.8	-20.6
DISTANCE	187	312	239
SPIN RATE	1483	3329	1890

BATTING AVG	.333
XWOBA	.385
SLUGGING	.433
HARD HIT %	6.1%
BOMBS %	0%
ROPES %	6.1%



ZONE BREAKDOWN

Zone	Volume of Hits	AVG LA	AVG EV	AVG RPM	AVG Distance
PULL	1/30	30	81	940	258
MIDDLE	14/30	19	80	1644	224
OPPO	15/30	15	83	1442	170

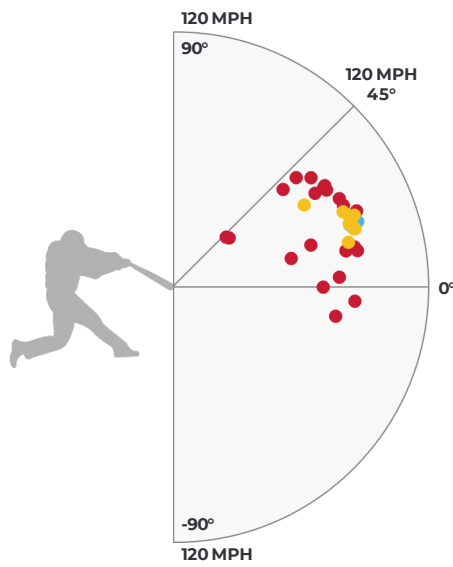
HIT OUTCOME

Single	Double	Triple	Home Run	Field Out
27.3%	6.1%	0%	0%	66.7%

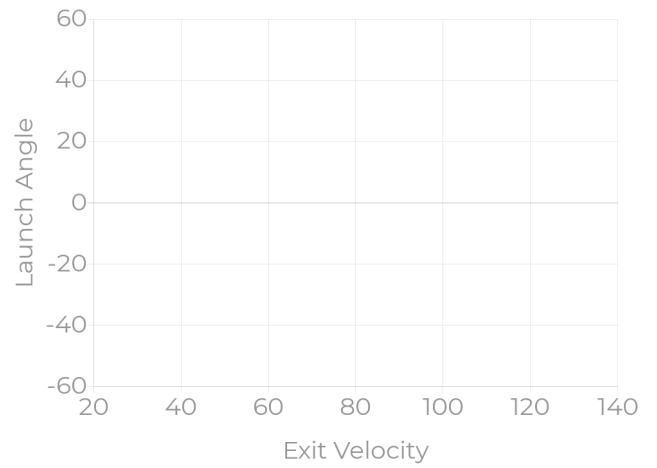
HIT CLASSIFICATIONS

Dribbler	Ground	Low Line	High Line	Fly Ball	Pop Up
0%	0%	0%	0%	0%	0%

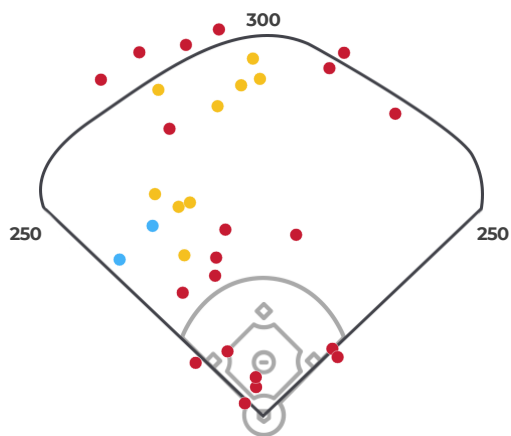
HIT OUTCOME VS LA & EV



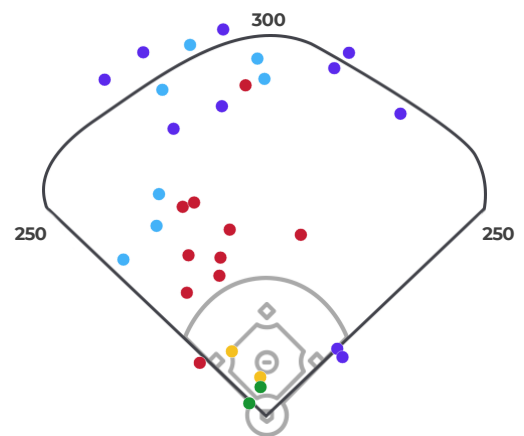
HIT CLASSIFICATIONS VS LA & EV



HIT OUTCOME



HIT CLASSIFICATIONS



STRIKE ZONE BREAKDOWN

LAUNCH ANGLE

SPIN RATE

10 (1/30)	9 (1/30)	14 (4/30)	22.5 (2/30)	28 (1/30)
	15 (1/30)	14 (3/30)	19 (3/30)	18 (1/30)
	42 (1/30)		9 (2/30)	23 (1/30)
		8 (1/30)	30 (1/30)	45 (1/30)

1864 (1/30)	1707 (1/30)	1455 (4/30)	1864 (2/30)	1527 (1/30)
	956 (1/30)	1022 (3/30)	1972 (3/30)	1822 (1/30)
	3275 (1/30)		1300 (2/30)	1538 (1/30)
		487 (1/30)	2278 (1/30)	1167 (1/30)

EXIT VELOCITY

XWOBA

56 (1/30)	86 (1/30)	82 (4/30)	80.5 (2/30)	69 (1/30)
	85 (1/30)	87 (3/30)	84 (3/30)	90 (1/30)
	69 (1/30)		85 (2/30)	84 (1/30)
		87 (1/30)	82 (1/30)	35 (1/30)

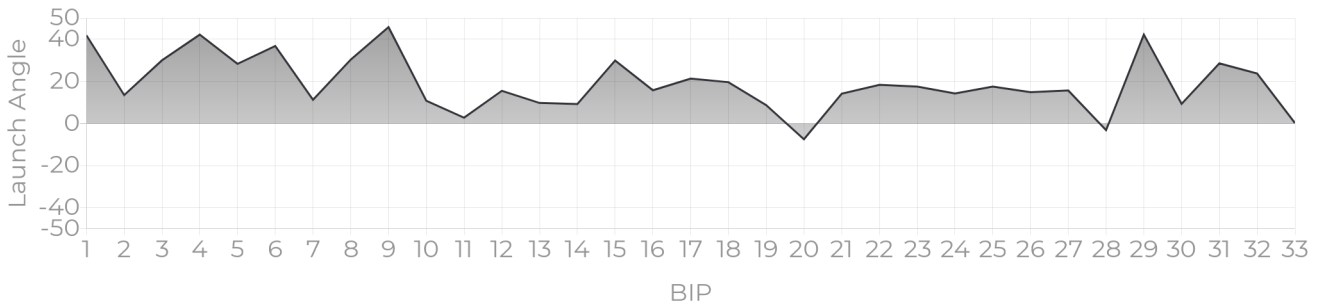
0.055 (1/30)	0.531 (1/30)	0.499 (4/30)	0.118 (2/30)	0.817 (1/30)
	1.066 (1/30)	0.582 (3/30)	0.512 (3/30)	0.092 (1/30)
	0.158 (1/30)		0.374 (2/30)	0.103 (1/30)
		0.211 (1/30)	0.032 (1/30)	0.006 (1/30)

PROGRESS REPORTS

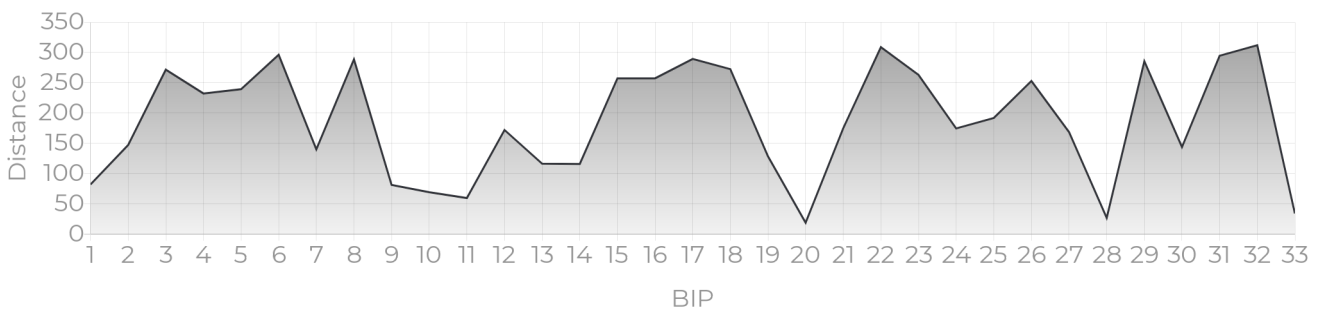
EV TRACKER



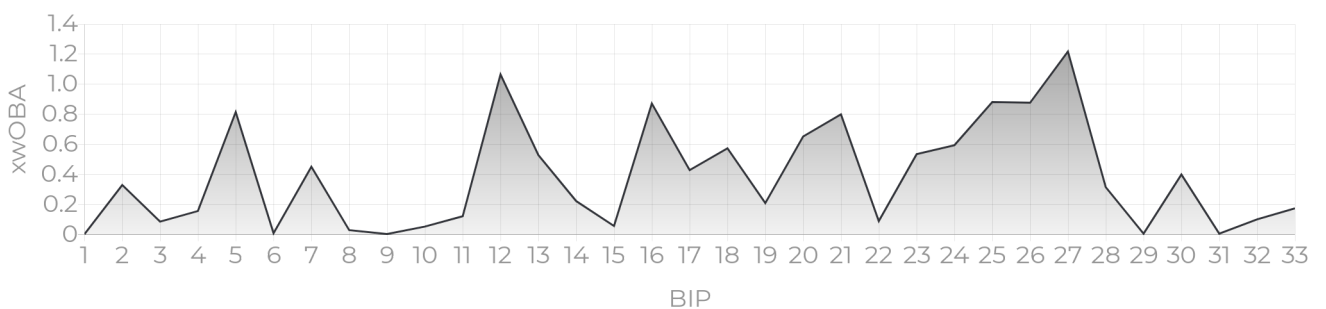
LA TRACKER



DISTANCE TRACKER



XWOBA TRACKER



XWOBA

Expected Weighted On Base Average is a term commonly used inside of the MLB taking Launch Angle and Exit Velocity to determine the Expected OBA and often compared to the Actual OBA. This provides a tool for Rapsodo to provide an instant analysis off of each BBE (Batted Ball Event). In the same way that each batted ball is assigned a Hit Classification, every batted ball has been given a single, double, triple and home run probability based on the results of comparable batted balls from MLB data — in terms of similar exit velocity and launch angle.

BIP (BALLS IN PLAY)

Any ball hit within a range of -45 to 45 degree Exit Direction.

HARD HIT %

Any ball hit within 10% of a player's Max Exit Velo.

ROPES

Any Hard Hit Ball (within 10% of a player's Max Exit Velo) and hit between 10 and 20 degree Launch Angle.

BOMBS

Any Hard Hit Ball (within 10% of a player's Max Exit Velo) and Hit with a 20+ Launch Angle.

HIT CLASSIFICATIONS

Dribbler: A batted ball event with less than a 0 degree launch angle

Ground Ball: A batted ball event with a launch angle between 0 and 6 degrees

Low Line Drive: A batted ball event with a launch angle between 6 and 15 degrees

High Line Drive: A batted ball event with a launch angle between 15 and 24 degrees

Fly Ball: A batted ball event with a launch angle between 24 and 50 degrees

Pop Up: A batted ball event with a launch angle greater than 50 degrees