



GATEWAY
REGENSBURG

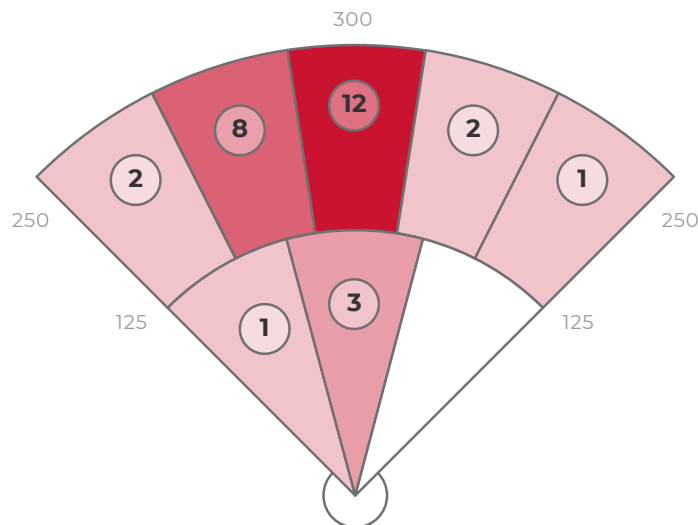
Legito

01.07.21

DATA

	AVG	MAX	HARD HIT AVG
EXIT VELO	80.1	95.9	91.6
L. ANGLE	22.9	51.5	14.9
DIRECTION	-4.2	49.8	-14.5
DISTANCE	215	321	236
SPIN RATE	1947	3775	1654

BATTING AVG	.367
XWOBA	.391
SLUGGING	.414
HARD HIT %	10.0%
BOMBS %	3.3%
ROPES %	3.3%



ZONE BREAKDOWN

Zone	Volume of Hits	AVG LA	AVG EV	AVG RPM	AVG Distance
PULL	3/29	36	71	3412	220
MIDDLE	17/29	20	81	1745	212
OPPO	9/29	22	84	1818	229

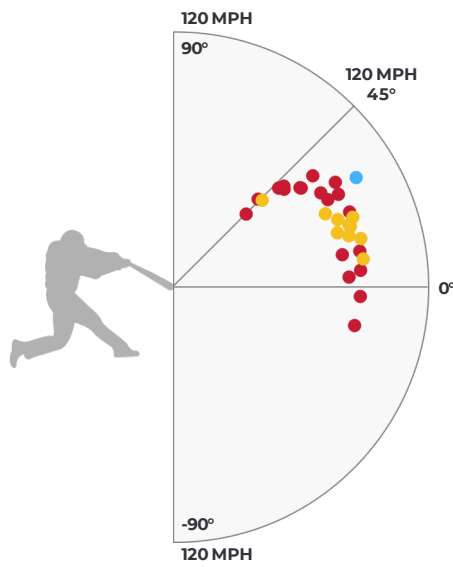
HIT OUTCOME

Single	Double	Triple	Home Run	Field Out
33.3%	3.3%	0%	0%	63.3%

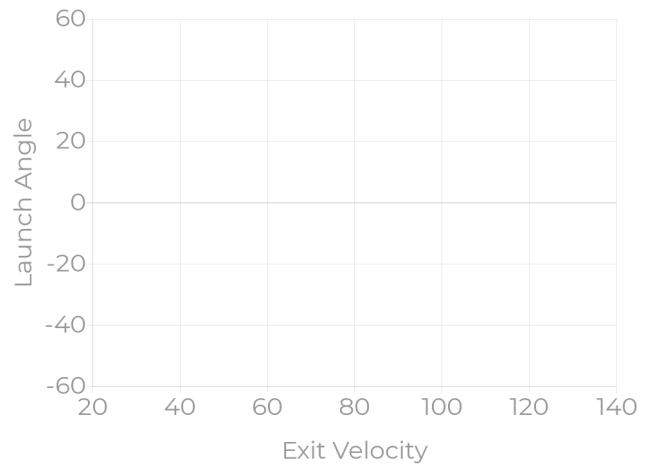
HIT CLASSIFICATIONS

Dribbler	Ground	Low Line	High Line	Fly Ball	Pop Up
0%	0%	0%	0%	0%	0%

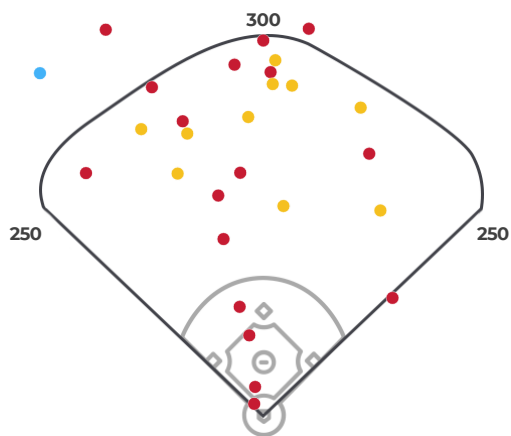
HIT OUTCOME VS LA & EV



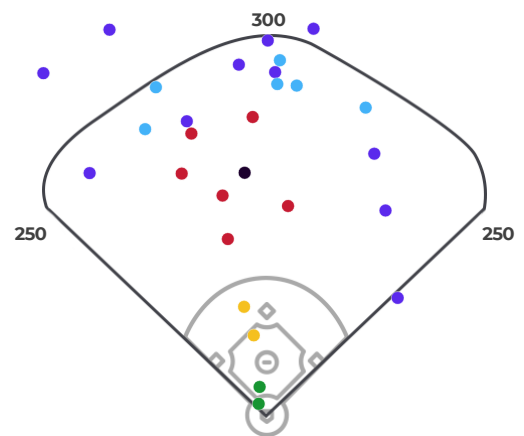
HIT CLASSIFICATIONS VS LA & EV



HIT OUTCOME



HIT CLASSIFICATIONS



STRIKE ZONE BREAKDOWN

LAUNCH ANGLE

SPIN RATE

36 (1/29)	8 (3/29)	14 (1/29)		34.5 (2/29)
	15 (2/29)	20 (2/29)	6 (1/29)	18 (1/29)
17 (1/29)		18.5 (4/29)		
			2 (1/29)	
-1 (1/29)				

1159 (1/29)	1087 (3/29)	949 (1/29)		2627 (2/29)
	1496 (2/29)	2779 (2/29)	1755 (1/29)	1117 (1/29)
793 (1/29)		1873 (4/29)		
			646 (1/29)	
892 (1/29)				

EXIT VELOCITY

XWOBA

73 (1/29)	81 (3/29)	79 (1/29)		73.5 (2/29)
	87 (2/29)	82.5 (2/29)	89 (1/29)	87 (1/29)
87 (1/29)		84.5 (4/29)		
			82 (1/29)	
87 (1/29)				

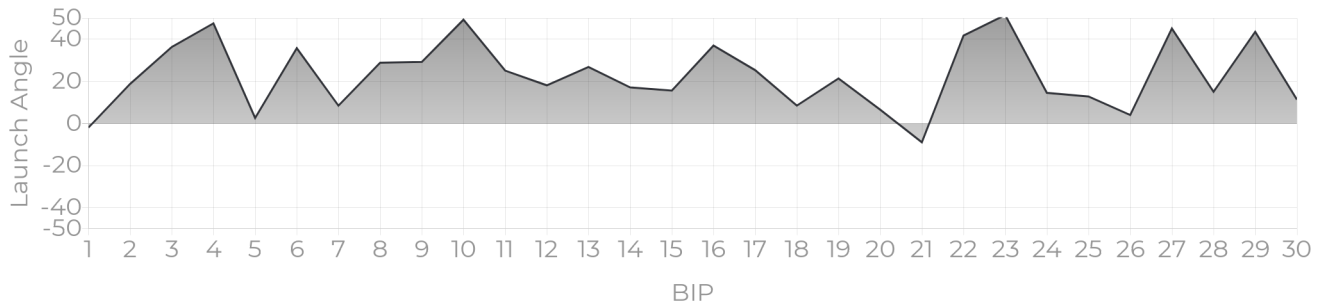
0.024 (1/29)	0.237 (3/29)	0.872 (1/29)		0.172 (2/29)
	0.534 (2/29)	0.429 (2/29)	0.569 (1/29)	0.353 (1/29)
0.851 (1/29)		0.312 (4/29)		
			0.304 (1/29)	
0.280 (1/29)				

PROGRESS REPORTS

EV TRACKER



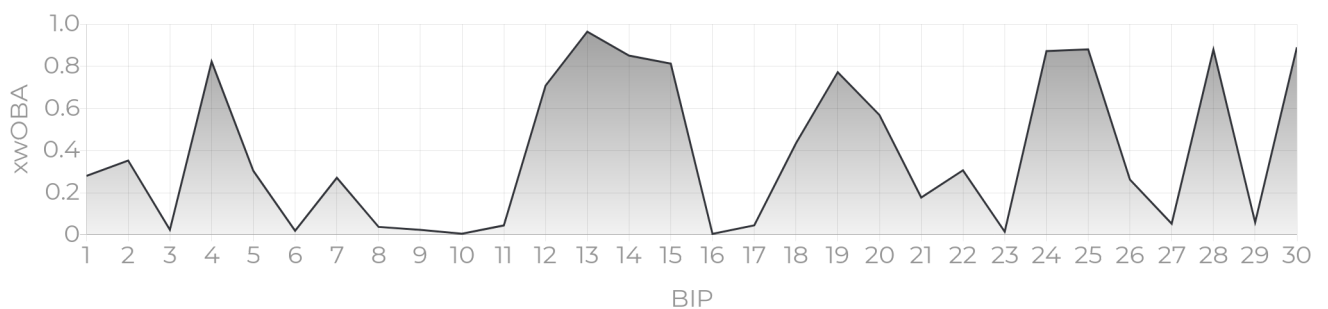
LA TRACKER



DISTANCE TRACKER



XWOBA TRACKER



XWOBA

Expected Weighted On Base Average is a term commonly used inside of the MLB taking Launch Angle and Exit Velocity to determine the Expected OBA and often compared to the Actual OBA. This provides a tool for Rapsodo to provide an instant analysis off of each BBE (Batted Ball Event). In the same way that each batted ball is assigned a Hit Classification, every batted ball has been given a single, double, triple and home run probability based on the results of comparable batted balls from MLB data — in terms of similar exit velocity and launch angle.

BIP (BALLS IN PLAY)

Any ball hit within a range of -45 to 45 degree Exit Direction.

HARD HIT %

Any ball hit within 10% of a player's Max Exit Velo.

ROPES

Any Hard Hit Ball (within 10% of a player's Max Exit Velo) and hit between 10 and 20 degree Launch Angle.

BOMBS

Any Hard Hit Ball (within 10% of a player's Max Exit Velo) and Hit with a 20+ Launch Angle.

HIT CLASSIFICATIONS

Dribbler: A batted ball event with less than a 0 degree launch angle

Ground Ball: A batted ball event with a launch angle between 0 and 6 degrees

Low Line Drive: A batted ball event with a launch angle between 6 and 15 degrees

High Line Drive: A batted ball event with a launch angle between 15 and 24 degrees

Fly Ball: A batted ball event with a launch angle between 24 and 50 degrees

Pop Up: A batted ball event with a launch angle greater than 50 degrees