



GATEWAY  
REGENSBURG

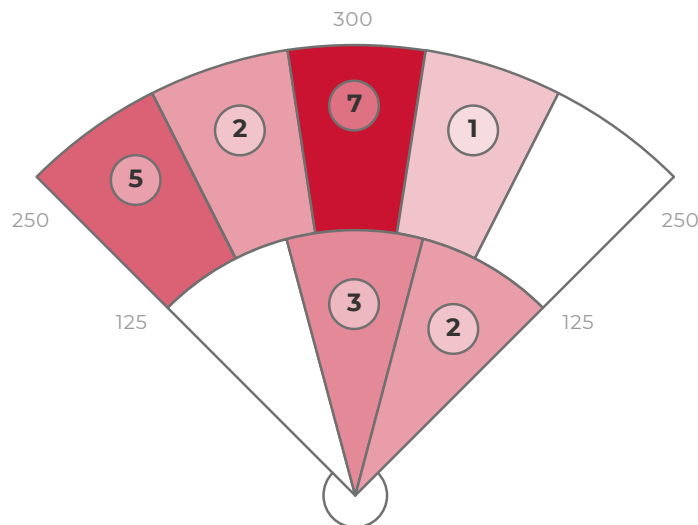
# Walther

## 29.06.21

### DATA

	AVG	MAX	HARD HIT AVG
EXIT VELO	80.5	92.3	90.5
L. ANGLE	16.7	34.0	19.8
DIRECTION	-5.7	37.6	-22.6
DISTANCE	194	330	260
SPIN RATE	1636	2908	1346

BATTING AVG	.400
XWOBA	.550
SLUGGING	.650
HARD HIT %	30.0%
BOMBS %	15.0%
ROPES %	15.0%



### ZONE BREAKDOWN

Zone	Volume of Hits	AVG LA	AVG EV	AVG RPM	AVG Distance
PULL	2/20	18	57	1138	79
MIDDLE	13/20	15	80	1763	196
OPPO	5/20	20	90	1505	234

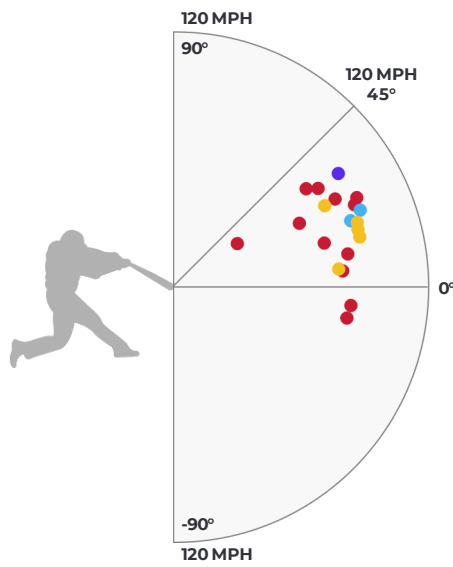
HIT OUTCOME

Single	Double	Triple	Home Run	Field Out
25.0%	10.0%	0%	5.0%	60.0%

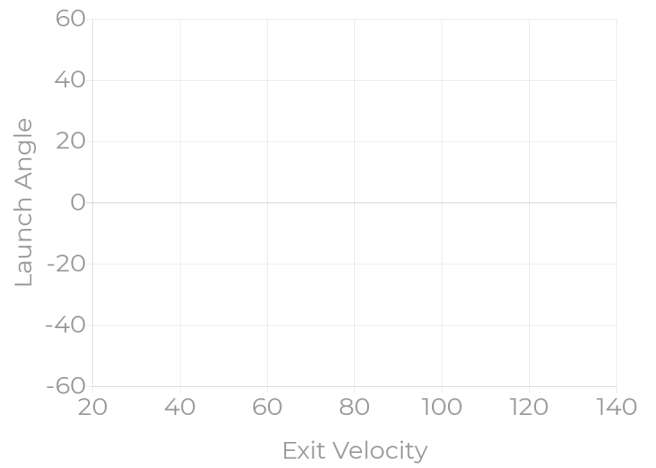
HIT CLASSIFICATIONS

Dribbler	Ground	Low Line	High Line	Fly Ball	Pop Up
0%	0%	0%	0%	0%	0%

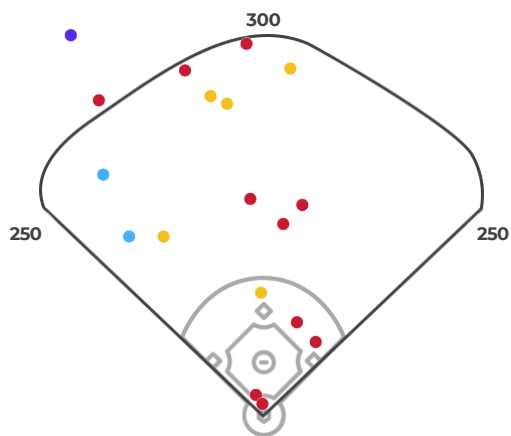
HIT OUTCOME VS LA & EV



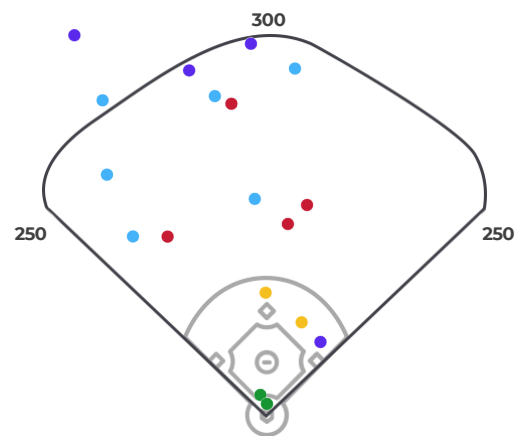
HIT CLASSIFICATIONS VS LA & EV



HIT OUTCOME



HIT CLASSIFICATIONS



**STRIKE ZONE BREAKDOWN**

**LAUNCH ANGLE**

**SPIN RATE**

<b>18</b> (1/20)		<b>16</b> (5/20)	<b>21.5</b> (2/20)	
			<b>20</b> (1/20)	<b>8</b> (1/20)
			<b>22</b> (5/20)	<b>24</b> (1/20)
			<b>15</b> (1/20)	<b>-7</b> (1/20)

<b>1221</b> (1/20)		<b>1557</b> (5/20)	<b>2538</b> (2/20)	
			<b>1512</b> (1/20)	<b>2199</b> (1/20)
			<b>1432</b> (5/20)	<b>2908</b> (1/20)
			<b>668</b> (1/20)	<b>1908</b> (1/20)

**EXIT VELOCITY**

**XWOBA**

<b>92</b> (1/20)		<b>86</b> (5/20)	<b>75.5</b> (2/20)	
			<b>90</b> (1/20)	<b>82</b> (1/20)
			<b>83</b> (5/20)	<b>77</b> (1/20)
			<b>89</b> (1/20)	<b>81</b> (1/20)

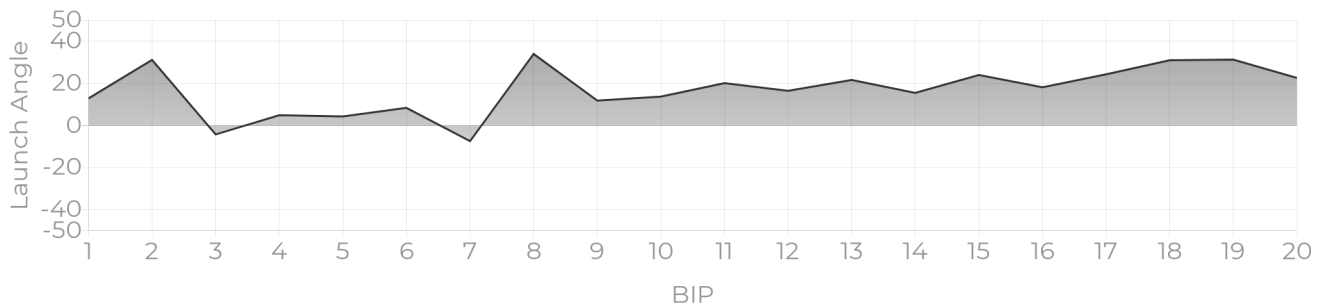
<b>1.203</b> (1/20)		<b>0.635</b> (5/20)	<b>0.232</b> (2/20)	
			<b>0.110</b> (1/20)	<b>0.359</b> (1/20)
			<b>0.711</b> (5/20)	<b>0.668</b> (1/20)
			<b>0.906</b> (1/20)	<b>0.170</b> (1/20)

**PROGRESS REPORTS**

**EV TRACKER**



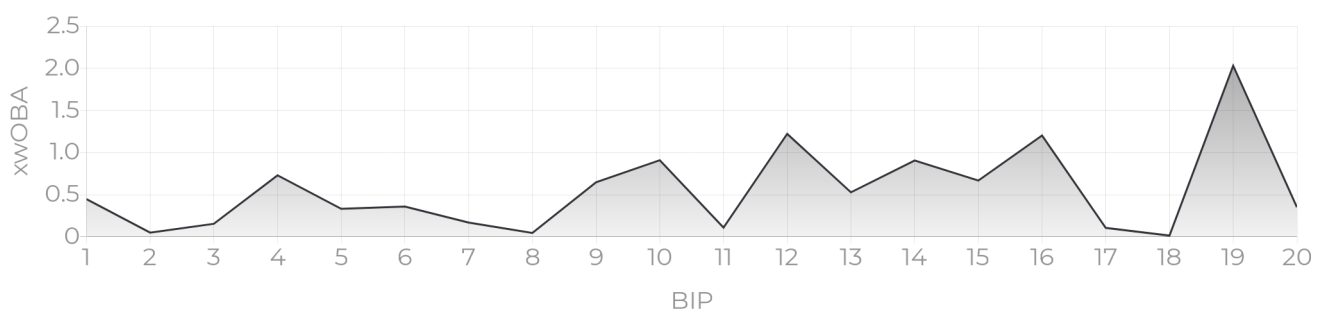
**LA TRACKER**



**DISTANCE TRACKER**



**XWOBA TRACKER**



## XWOBA

---

Expected Weighted On Base Average is a term commonly used inside of the MLB taking Launch Angle and Exit Velocity to determine the Expected OBA and often compared to the Actual OBA. This provides a tool for Rapsodo to provide an instant analysis off of each BBE (Batted Ball Event). In the same way that each batted ball is assigned a Hit Classification, every batted ball has been given a single, double, triple and home run probability based on the results of comparable batted balls from MLB data — in terms of similar exit velocity and launch angle.

## BIP (BALLS IN PLAY)

---

Any ball hit within a range of -45 to 45 degree Exit Direction.

## HARD HIT %

---

Any ball hit within 10% of a player's Max Exit Velo.

## ROPES

---

Any Hard Hit Ball (within 10% of a player's Max Exit Velo) and hit between 10 and 20 degree Launch Angle.

## BOMBS

---

Any Hard Hit Ball (within 10% of a player's Max Exit Velo) and Hit with a 20+ Launch Angle.

## HIT CLASSIFICATIONS

---

**Dribbler:** A batted ball event with less than a 0 degree launch angle

**Ground Ball:** A batted ball event with a launch angle between 0 and 6 degrees

**Low Line Drive:** A batted ball event with a launch angle between 6 and 15 degrees

**High Line Drive:** A batted ball event with a launch angle between 15 and 24 degrees

**Fly Ball:** A batted ball event with a launch angle between 24 and 50 degrees

**Pop Up:** A batted ball event with a launch angle greater than 50 degrees