

GATEWAY REGENSBURG

2023

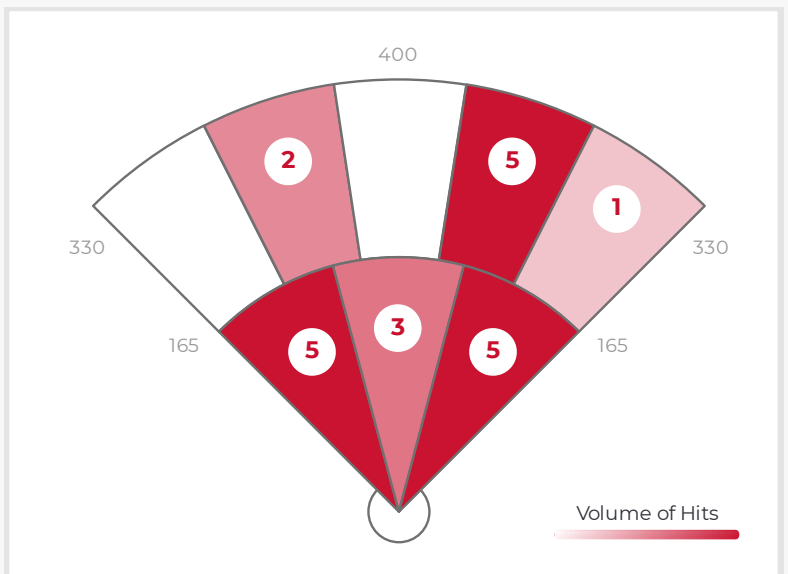
Anderson ZAMBRANO#52

DATA

	AVG	MAX	HARD HIT AVG
E. VELOCITY	85.7	90.6	85.7
L. ANGLE	10.8	38.2	10.8
DIRECTION	3.9°R	43.9°L	3.9°R
DISTANCE	147	331	147
SPIN RATE	1707	3379	1707

BATTING AVG.	.381
XWOBA	.510
SLUGGING	.619
HARD HIT %	100.0%
BOMBS %	19.0%
ROPES %	33.3%

RAPSCORE



ZONE BREAKDOWN

Zone	Volume of Hits	AVG LA	AVG EV	AVG RPM	AVG Distance
PULL	9/21	10	85	1882	143
MIDDLE	5/21	8	87	1191	136
OPPO	7/21	14	86	1851	162

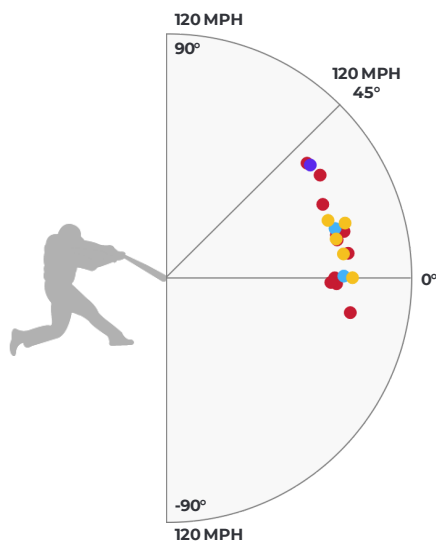
HIT OUTCOME

Single	Double	Triple	Homerun	Field Out	Foul Ball
23.8%	9.5%	0%	4.8%	61.9%	0%

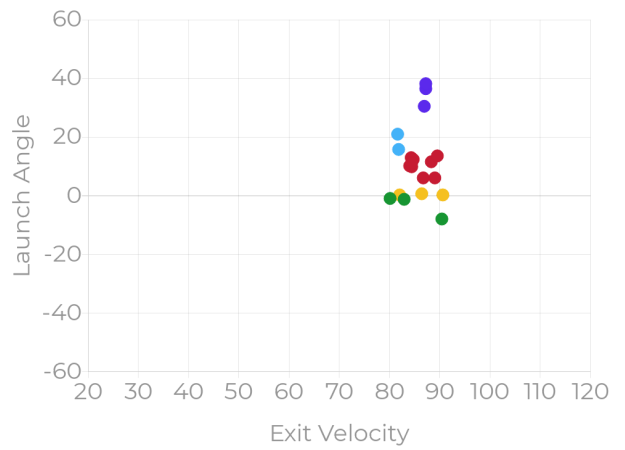
HIT CLASSIFICATION

Dribbler	Ground Ball	Low Line Drive	High Line Drive	Fly Ball	Pop Up
14.3%	19.0%	42.9%	9.5%	14.3%	0%

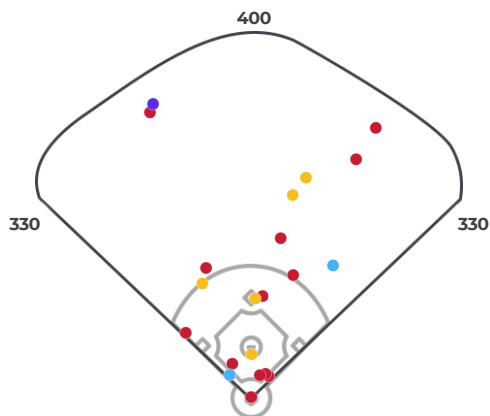
HIT OUTCOME VS LA & EV



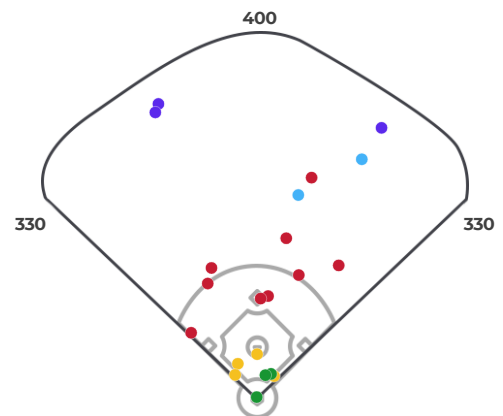
HIT CLASSIFICATIONS VS LA & EV



HIT OUTCOME



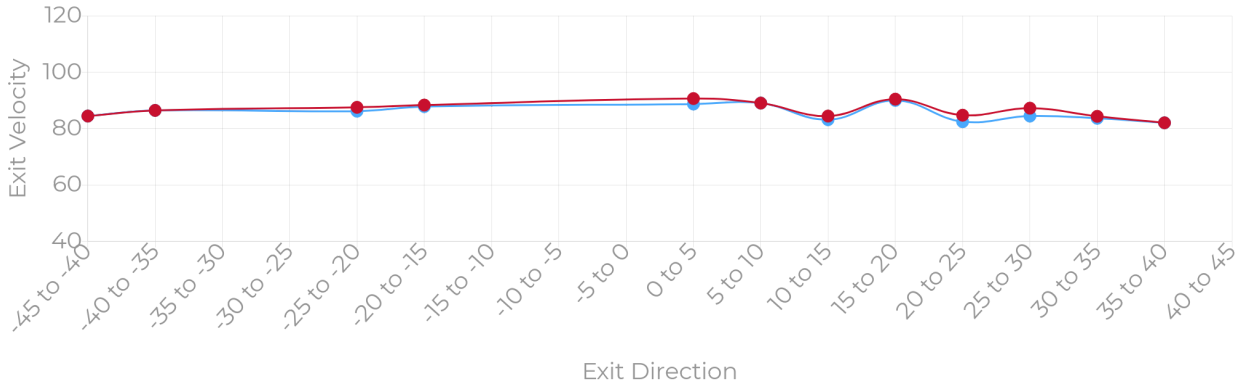
HIT CLASSIFICATION



● MAX ● AVG

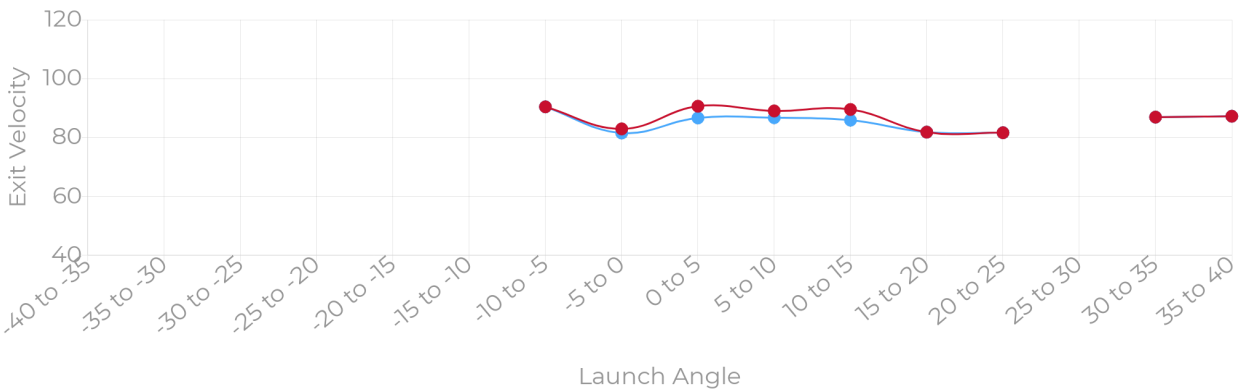
MAX EV, AVG EV BY EXIT DIRECTION

Exit velocities are shown for all balls in play within the listed exit direction ranges.



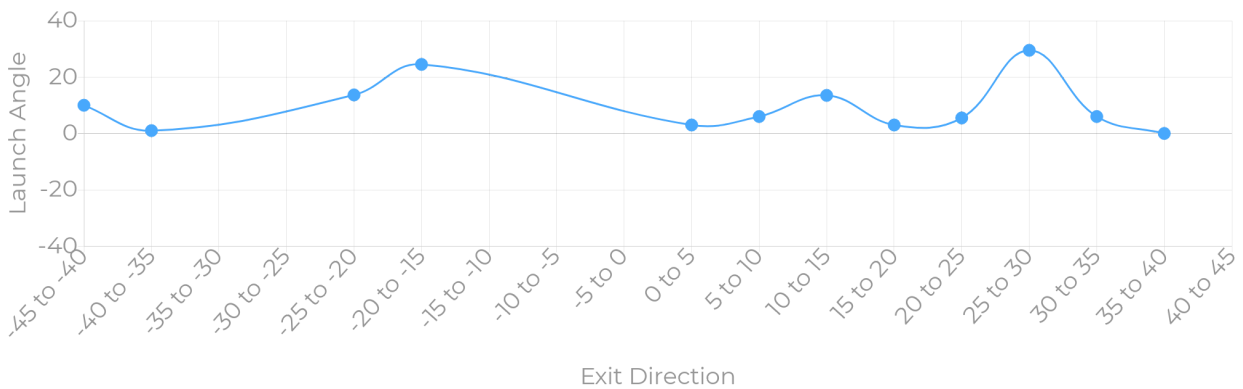
MAX EV, AVG EV BY LAUNCH ANGLE

Exit velocities are shown for all balls in play within the listed launch angle ranges.



LAUNCH ANGLE BY EXIT DIRECTION

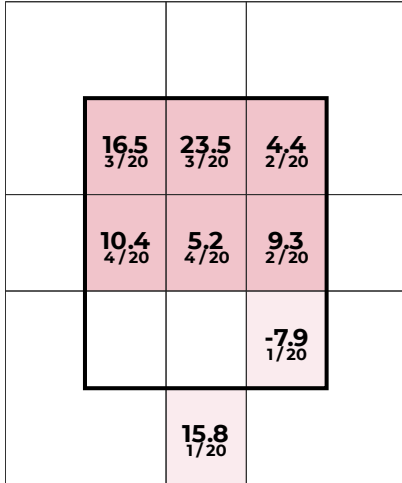
Average launch angles are shown for all balls in play within the listed exit direction ranges.



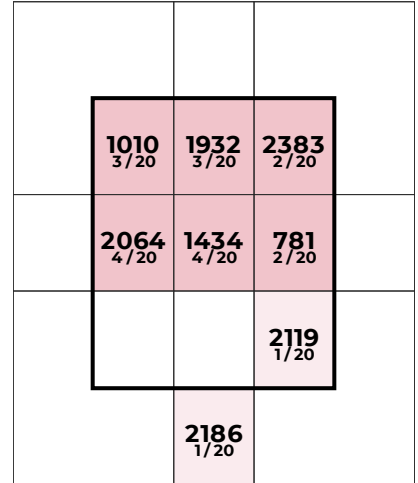
STRIKE ZONE BREAKDOWN

LAUNCH ANGLE

SPIN RATE

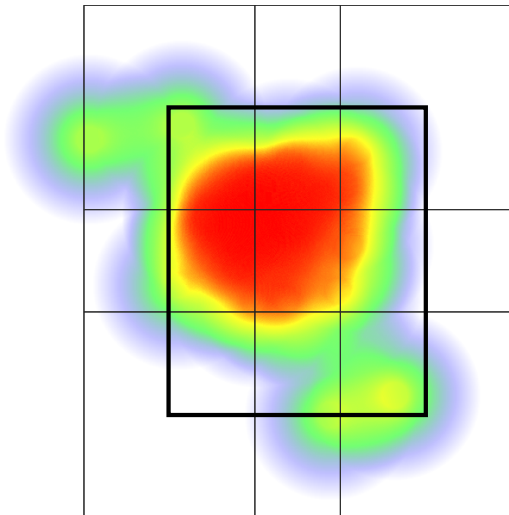


		Avg EV	Avg LA
HORIZONTAL	INNER THIRD	86.6	1.9
	MIDDLE THIRD	86.6	14.3
	OUTER THIRD	85.3	13.4
VERTICAL	UPPER THIRD	84.8	14.8
	MIDDLE THIRD	86.3	8.3
	LOWER THIRD	90.4	-7.9

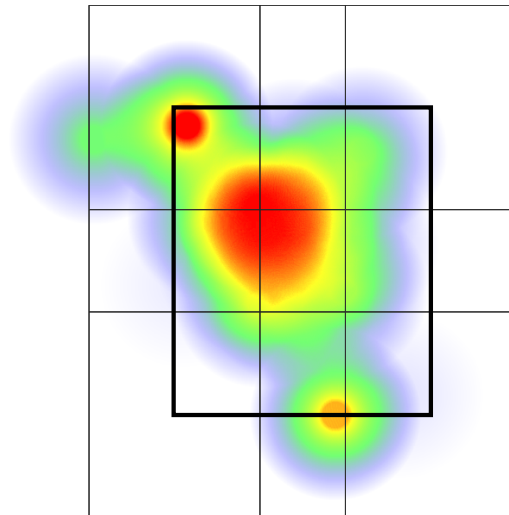


EXIT VELOCITY

XWOBA



Catcher's POV



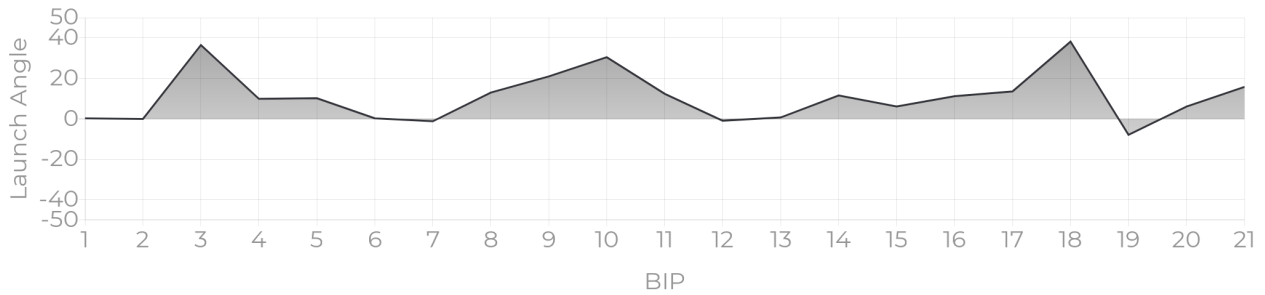
Catcher's POV

PROGRESS REPORTS

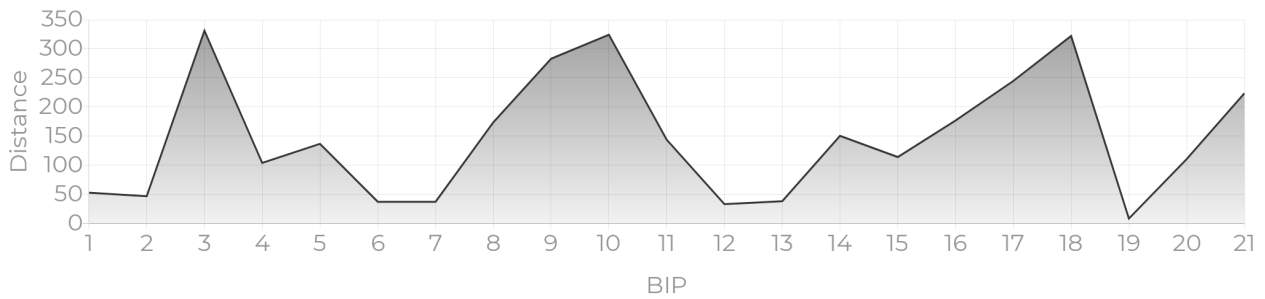
EV TRACKER



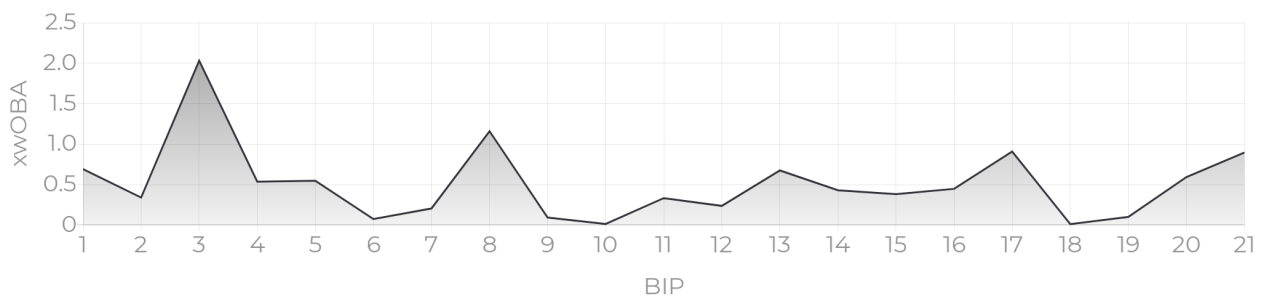
LA TRACKER



DISTANCE TRACKER



XWOBA TRACKER



XWOBA

Expected Weighted On Base Average is a term commonly used inside of the MLB taking Launch Angle and Exit Velocity to determine the Expected OBA and often compared to the Actual OBA. This provides a tool for Rapsodo to provide an instant analysis of each BBE (Batted Ball Event). In the same way that each batted ball is assigned a Hit Classification, every batted ball has been given a single, double, triple and home run probability based on the results of comparable batted balls from MLB data — in terms of similar exit velocity and launch angle.

BIP (BALL IN PLAY)

Any ball hit within a range of -45 to 45 degree Exit Direction.

HARD HIT %

Any ball hit within 12.5% of a player's Max Exit Velo.

ROPES

Any Hard Hit Ball (within 12.5% of a player's Max Exit Velo) and hit between 10 and 20 degree Launch Angle.

BOMBS

Any Hard Hit Ball (within 12.5% of a player's Max Exit Velo) and Hit with a 20+ Launch Angle.

HIT CLASSIFICATION

- Dribbler:** A batted ball event with less than a 0 degree launch angle
- Ground Ball:** A batted ball event with a launch angle between 0 and 6 degrees
- Low Line Drive:** A batted ball event with a launch angle between 6 and 15 degrees
- High Line Drive:** A batted ball event with a launch angle between 15 and 24 degrees
- Fly Ball:** A batted ball event with a launch angle between 24 and 50 degrees
- Pop Up:** A batted ball event with a launch angle greater than 50 degrees