

# GATEWAY REGENSBURG

## 2023

### Freddy TREMARIA #93

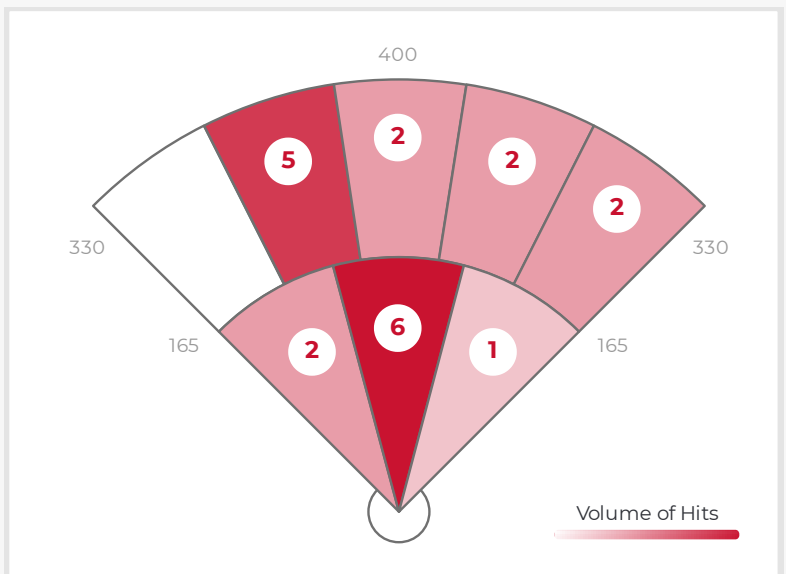
DATA

	AVG	MAX	HARD HIT AVG
E. VELOCITY	88.0	95.4	88.7
L. ANGLE	13.0	40.8	12.2
DIRECTION	2°L	36.6°R	5.4°L
DISTANCE	180	357	182
SPIN RATE	1324	3480	1129

BATTING AVG.	.450
XWOBA	.540
SLUGGING	.650
HARD HIT %	90.0%
BOMBS %	15.0%
ROPES %	40.0%

RAPSCORE

**R46**  
PRO  
**R75**  
HIGH SCHOOL



ZONE BREAKDOWN

Zone	Volume of Hits	AVG LA	AVG EV	AVG RPM	AVG Distance
PULL	4/20	16	85	2215	168
MIDDLE	10/20	9	88	1026	150
OPPO	6/20	17	90	1227	237

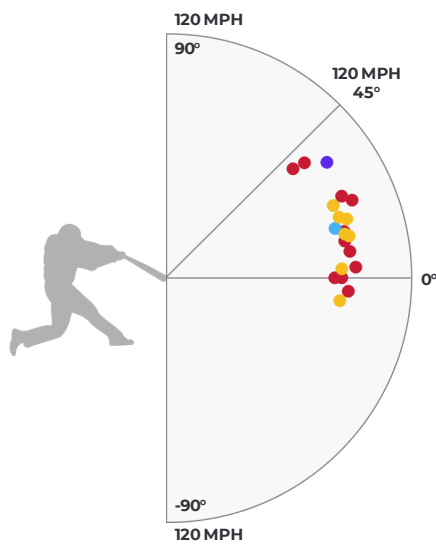
**HIT OUTCOME**

Single	Double	Triple	Homerun	Field Out	Foul Ball
35.0%	5.0%	0%	5.0%	55.0%	0%

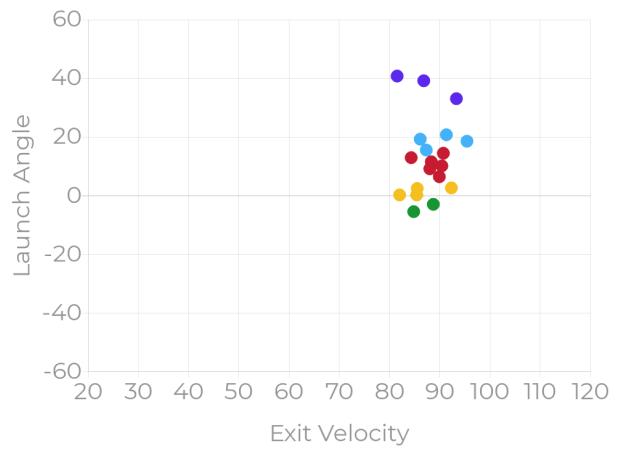
**HIT CLASSIFICATION**

Dribbler	Ground Ball	Low Line Drive	High Line Drive	Fly Ball	Pop Up
10.0%	20.0%	35.0%	20.0%	15.0%	0%

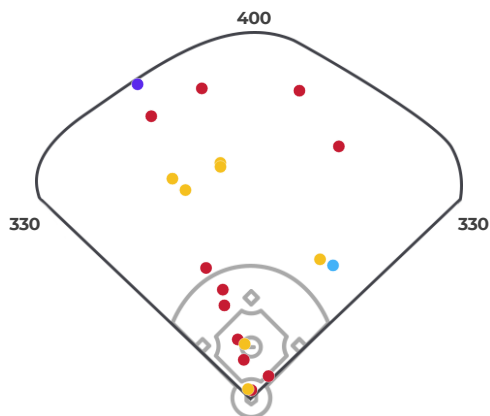
**HIT OUTCOME VS LA & EV**



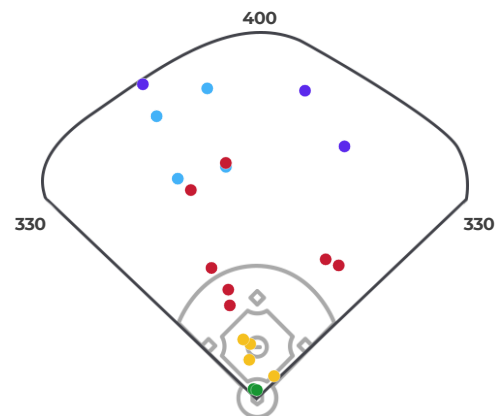
**HIT CLASSIFICATIONS VS LA & EV**



**HIT OUTCOME**



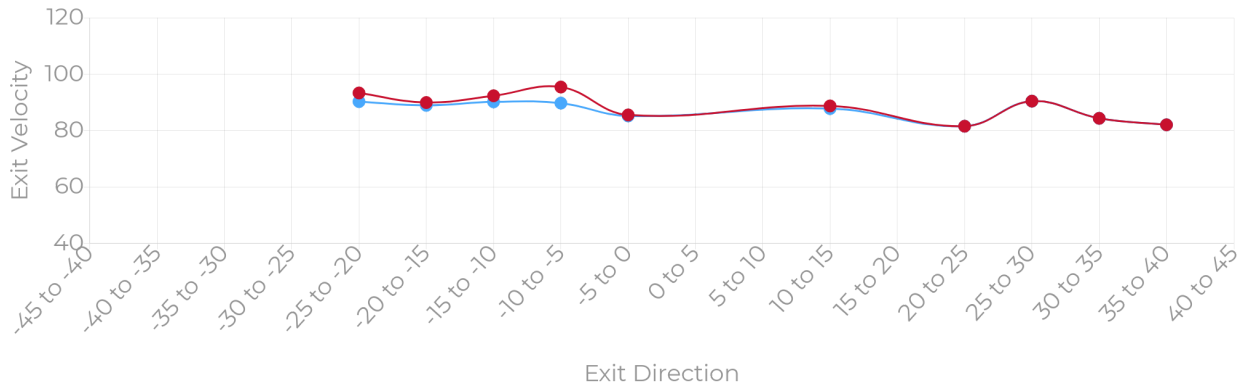
**HIT CLASSIFICATION**



● MAX ● AVG

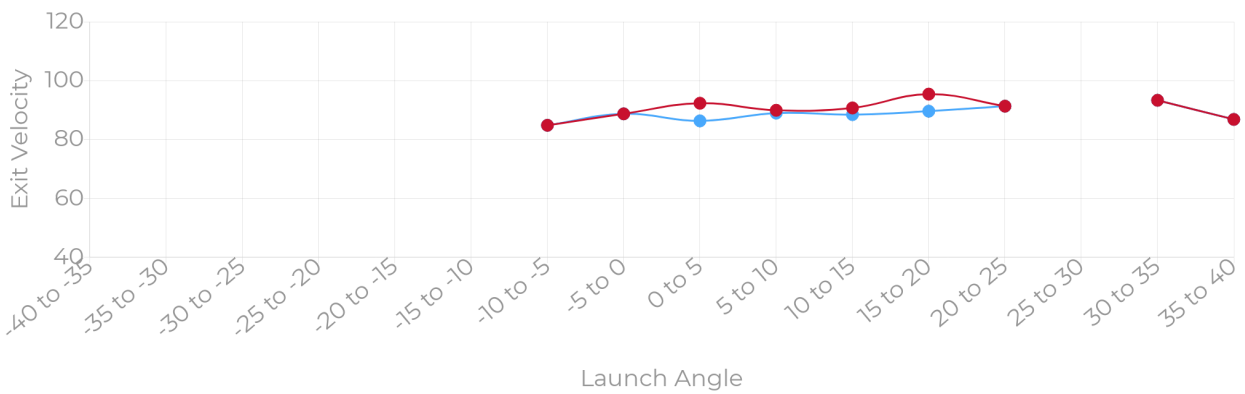
**MAX EV, AVG EV BY EXIT DIRECTION**

*Exit velocities are shown for all balls in play within the listed exit direction ranges.*



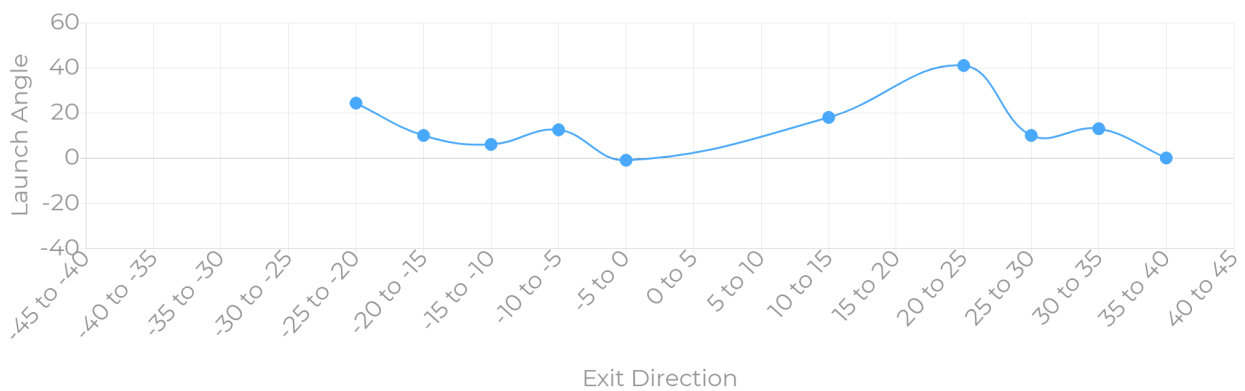
**MAX EV, AVG EV BY LAUNCH ANGLE**

*Exit velocities are shown for all balls in play within the listed launch angle ranges.*



**LAUNCH ANGLE BY EXIT DIRECTION**

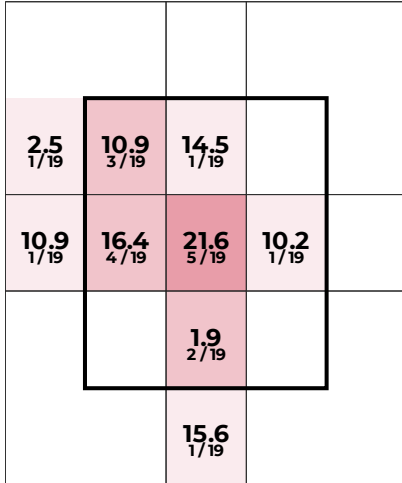
*Average launch angles are shown for all balls in play within the listed exit direction ranges.*



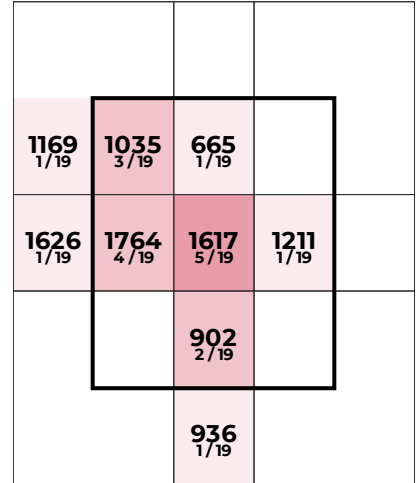
**STRIKE ZONE BREAKDOWN**

**LAUNCH ANGLE**

**SPIN RATE**

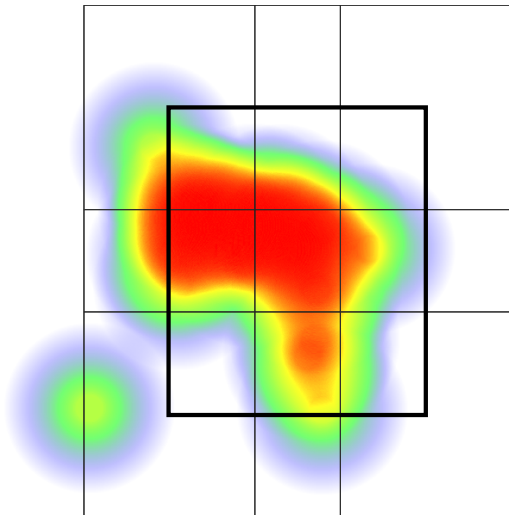


		Avg EV	Avg LA
HORIZONTAL	INNER THIRD	90.4	10.2
	MIDDLE THIRD	88.8	12.7
	OUTER THIRD	87.0	13.7
VERTICAL	UPPER THIRD	88.0	12.7
	MIDDLE THIRD	89.4	16.1
	LOWER THIRD	86.4	1.9

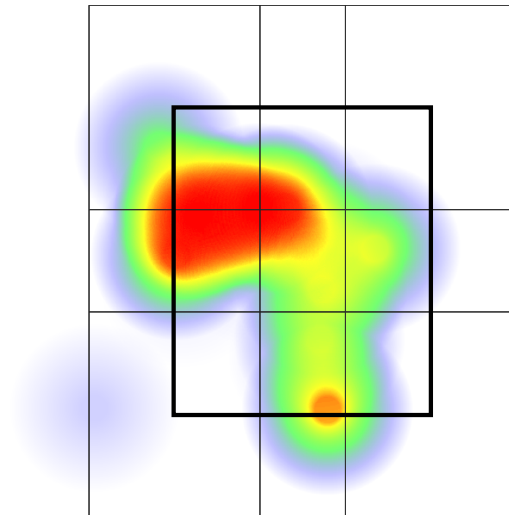


**EXIT VELOCITY**

**XWOBA**



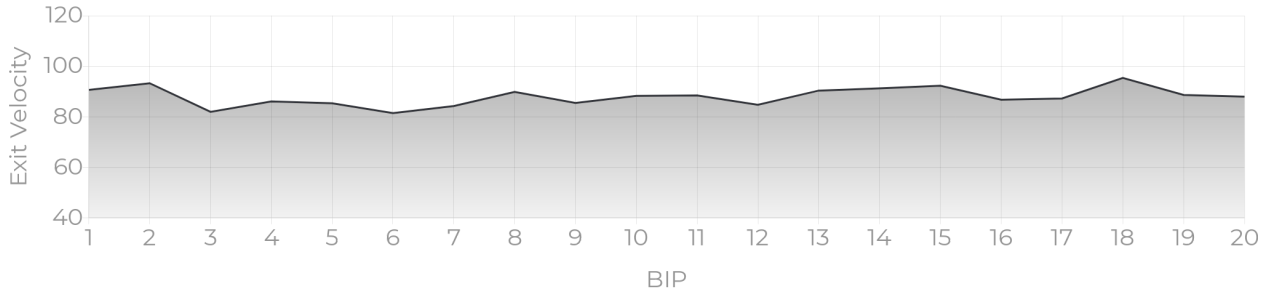
Catcher's POV



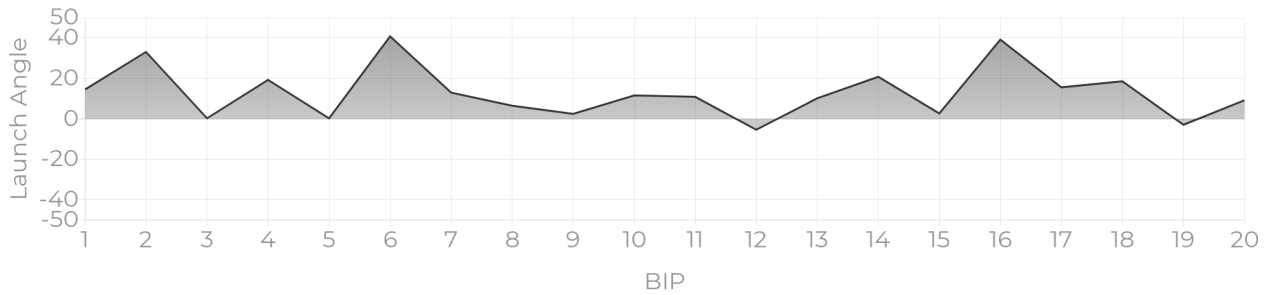
Catcher's POV

**PROGRESS REPORTS**

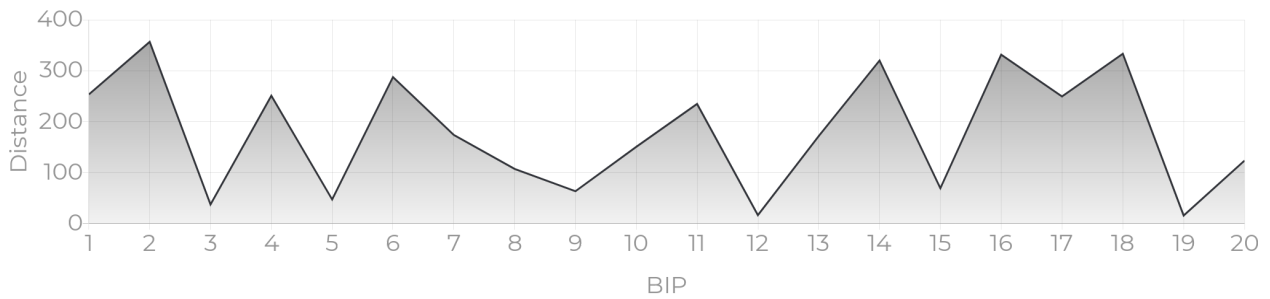
**EV TRACKER**



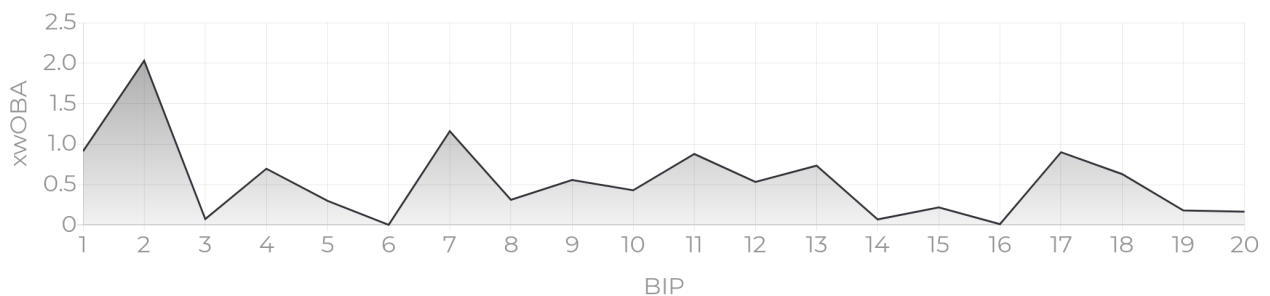
**LA TRACKER**



**DISTANCE TRACKER**



**XWOBA TRACKER**



## XWOBA

---

Expected Weighted On Base Average is a term commonly used inside of the MLB taking Launch Angle and Exit Velocity to determine the Expected OBA and often compared to the Actual OBA. This provides a tool for Rapsodo to provide an instant analysis of each BBE (Batted Ball Event). In the same way that each batted ball is assigned a Hit Classification, every batted ball has been given a single, double, triple and home run probability based on the results of comparable batted balls from MLB data — in terms of similar exit velocity and launch angle.

## BIP (BALL IN PLAY)

---

Any ball hit within a range of -45 to 45 degree Exit Direction.

## HARD HIT %

---

Any ball hit within 12.5% of a player's Max Exit Velo.

## ROPES

---

Any Hard Hit Ball (within 12.5% of a player's Max Exit Velo) and hit between 10 and 20 degree Launch Angle.

## BOMBS

---

Any Hard Hit Ball (within 12.5% of a player's Max Exit Velo) and Hit with a 20+ Launch Angle.

## HIT CLASSIFICATION

---

- Dribbler:** A batted ball event with less than a 0 degree launch angle
- Ground Ball:** A batted ball event with a launch angle between 0 and 6 degrees
- Low Line Drive:** A batted ball event with a launch angle between 6 and 15 degrees
- High Line Drive:** A batted ball event with a launch angle between 15 and 24 degrees
- Fly Ball:** A batted ball event with a launch angle between 24 and 50 degrees
- Pop Up:** A batted ball event with a launch angle greater than 50 degrees