

# GATEWAY REGENSBURG

## 2023

### Moritz KÖHLER #18

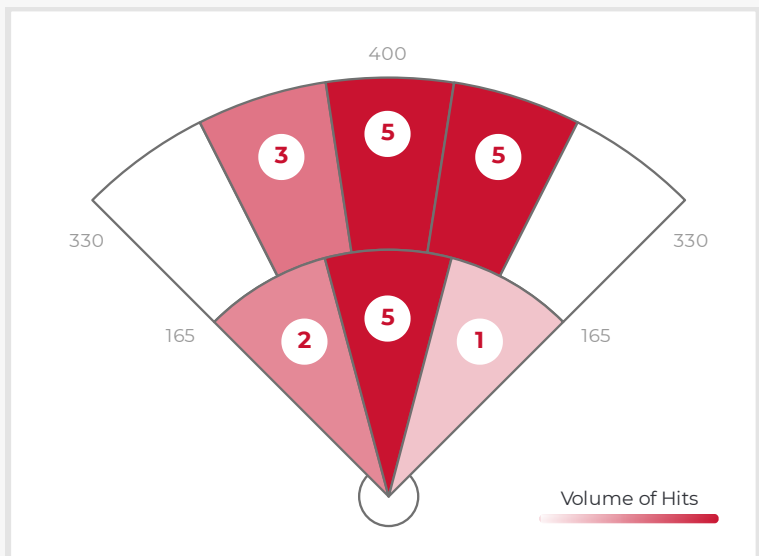
DATA

	AVG	MAX	HARD HIT AVG
E. VELOCITY	81.1	86.1	82.6
L. ANGLE	16.7	43.1	15.6
DIRECTION	1.7°L	36.7°L	0.6°R
DISTANCE	194	313	191
SPIN RATE	1798	3306	1743

BATTING AVG.	.476
XWOBA	.476
SLUGGING	.524
HARD HIT %	81.0%
BOMBS %	23.8%
ROPES %	38.1%

RAPSCORE

**R32**  
PRO  
**R61**  
HIGH SCHOOL



ZONE BREAKDOWN

Zone	Volume of Hits	AVG LA	AVG EV	AVG RPM	AVG Distance
PULL	5/21	18	81	2022	196
MIDDLE	12/21	18	81	1590	204
OPPO	4/21	11	81	1692	162

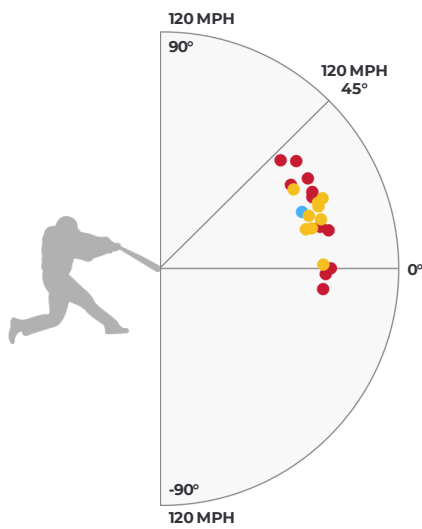
**HIT OUTCOME**

Single	Double	Triple	Homerun	Field Out	Foul Ball
42.9%	4.8%	0%	0%	52.4%	0%

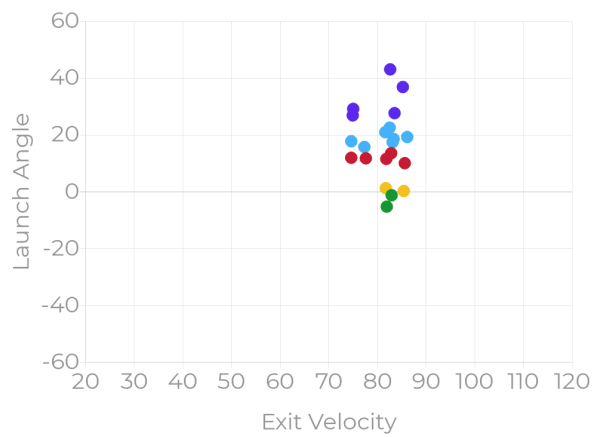
**HIT CLASSIFICATION**

Dribbler	Ground Ball	Low Line Drive	High Line Drive	Fly Ball	Pop Up
9.5%	9.5%	23.8%	33.3%	23.8%	0%

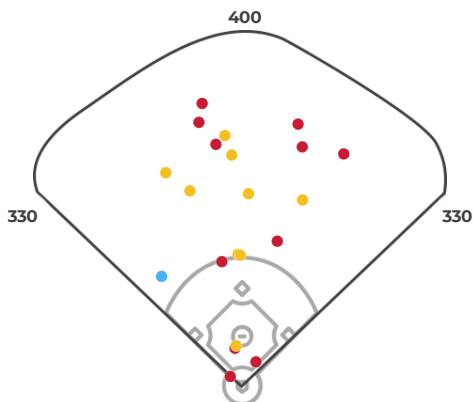
**HIT OUTCOME VS LA & EV**



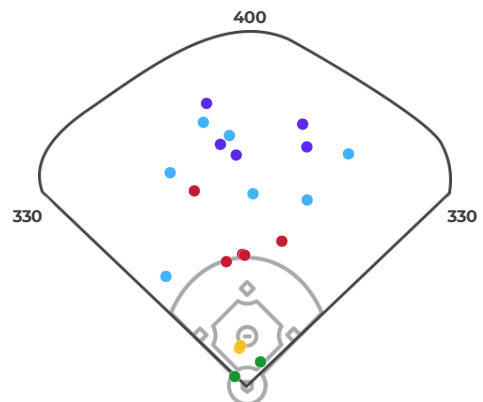
**HIT CLASSIFICATIONS VS LA & EV**



**HIT OUTCOME**



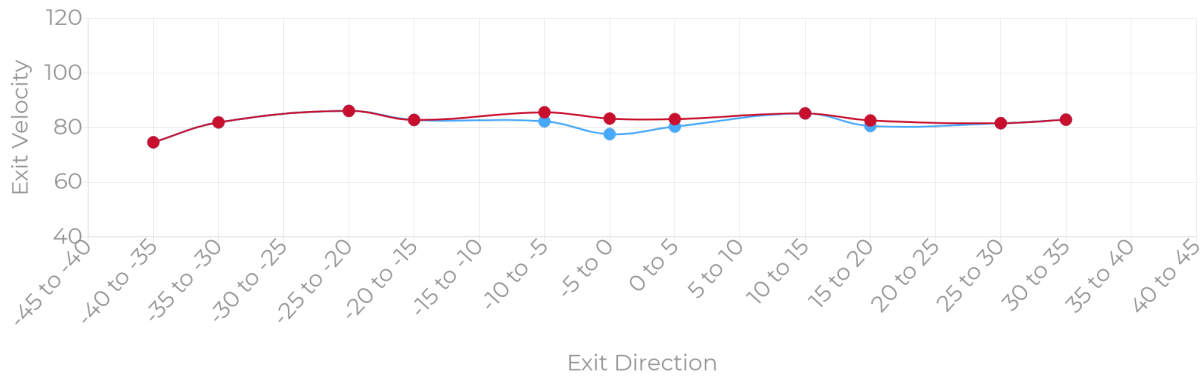
**HIT CLASSIFICATION**



● MAX ● AVG

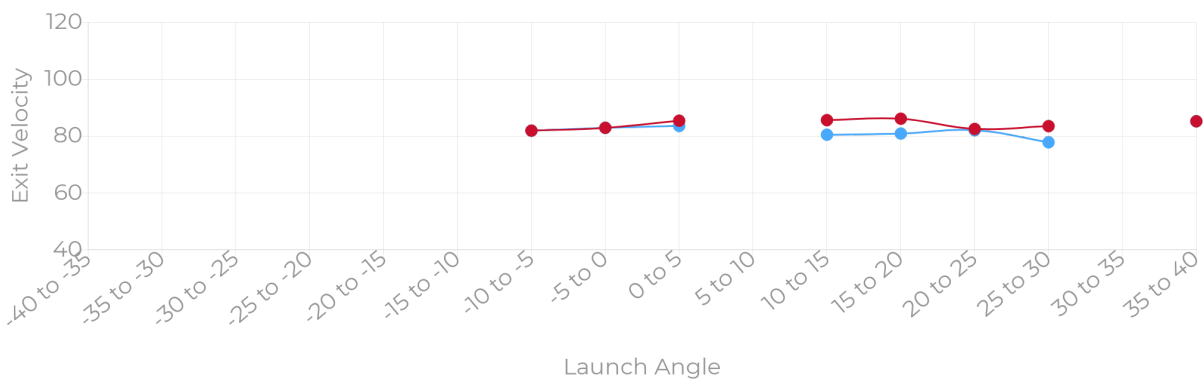
**MAX EV, AVG EV BY EXIT DIRECTION**

*Exit velocities are shown for all balls in play within the listed exit direction ranges.*



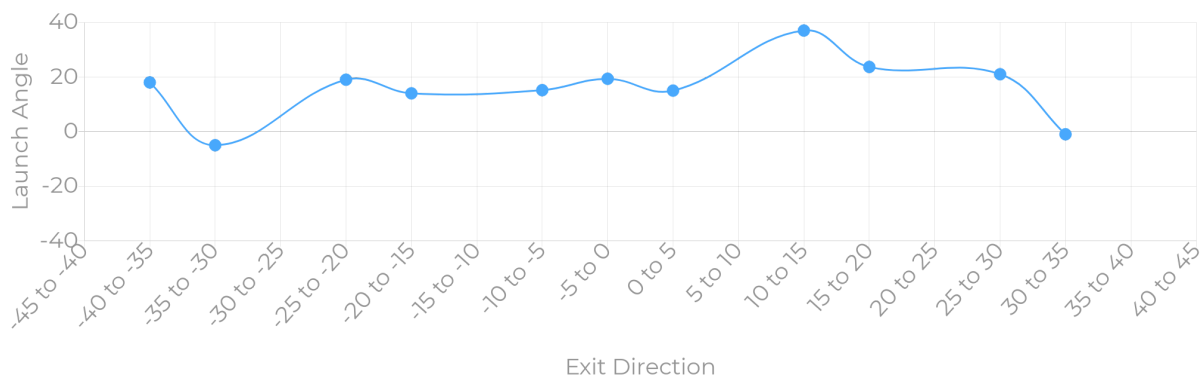
**MAX EV, AVG EV BY LAUNCH ANGLE**

*Exit velocities are shown for all balls in play within the listed launch angle ranges.*



**LAUNCH ANGLE BY EXIT DIRECTION**

*Average launch angles are shown for all balls in play within the listed exit direction ranges.*



**STRIKE ZONE BREAKDOWN**

**LAUNCH ANGLE**

**SPIN RATE**

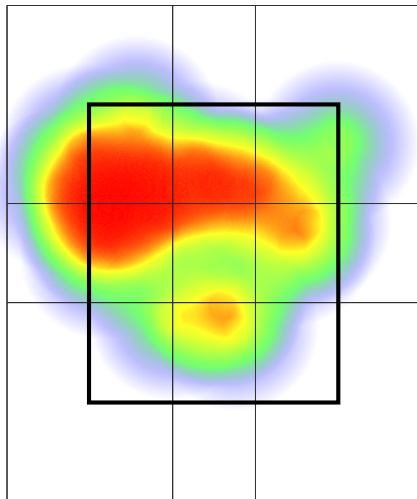
		13.6 17/21		
13.9 2/21	20.3 5/21	17.2 3/21	-1.2 1/21	15.8 1/21
	3.2 2/21	27.7 1/21	19.1 2/21	
	22.6 17/21	23.4 2/21		

		Avg EV	Avg LA
HORIZONTAL	INNER THIRD	83.2	8.9
	MIDDLE THIRD	80.8	22.8
	OUTER THIRD	81.9	15.4
VERTICAL	UPPER THIRD	81.4	12.1
	MIDDLE THIRD	82.9	16.7
	LOWER THIRD	80.8	23.0

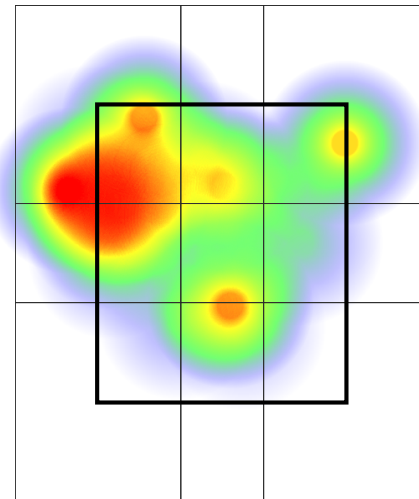
		1144 1/21		
1595 2/21	1504 5/21	1306 3/21	1864 1/21	3191 1/21
	2222 2/21	1857 1/21	1859 2/21	
	1836 1/21	3269 1/21		

**EXIT VELOCITY**

**XWOBA**



Catcher's POV



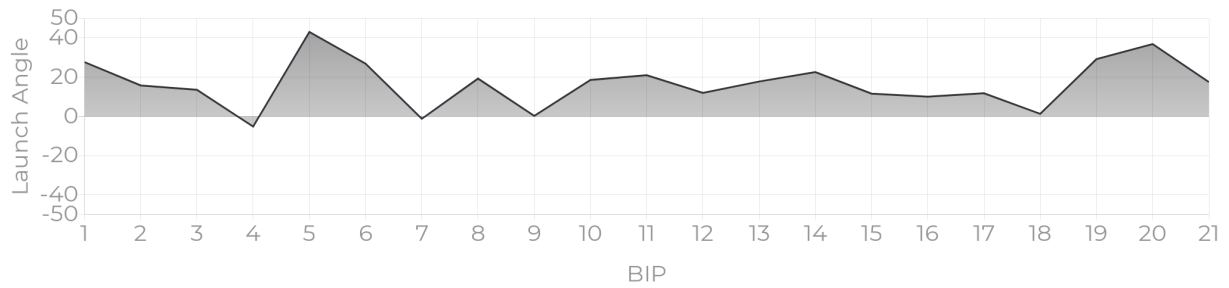
Catcher's POV

**PROGRESS REPORTS**

**EV TRACKER**



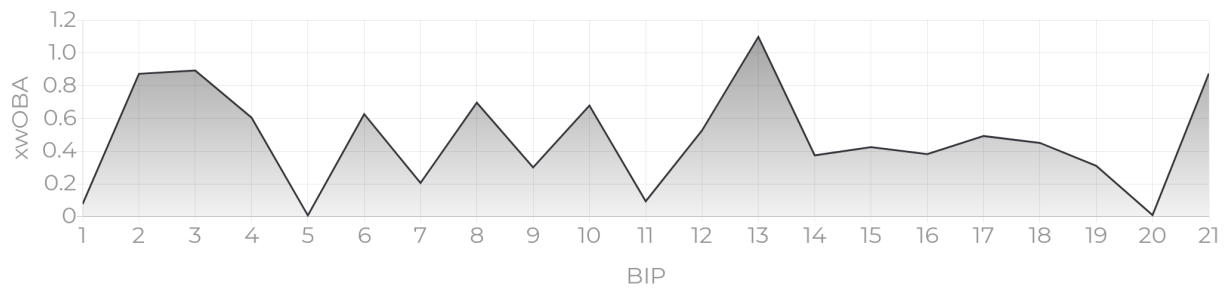
**LA TRACKER**



**DISTANCE TRACKER**



**XWOBA TRACKER**



## XWOBA

---

Expected Weighted On Base Average is a term commonly used inside of the MLB taking Launch Angle and Exit Velocity to determine the Expected OBA and often compared to the Actual OBA. This provides a tool for Rapsodo to provide an instant analysis of each BBE (Batted Ball Event). In the same way that each batted ball is assigned a Hit Classification, every batted ball has been given a single, double, triple and home run probability based on the results of comparable batted balls from MLB data — in terms of similar exit velocity and launch angle.

## BIP (BALL IN PLAY)

---

Any ball hit within a range of -45 to 45 degree Exit Direction.

## HARD HIT %

---

Any ball hit within 12.5% of a player's Max Exit Velo.

## ROPES

---

Any Hard Hit Ball (within 12.5% of a player's Max Exit Velo) and hit between 10 and 20 degree Launch Angle.

## BOMBS

---

Any Hard Hit Ball (within 12.5% of a player's Max Exit Velo) and Hit with a 20+ Launch Angle.

## HIT CLASSIFICATION

---

- Dribbler:** A batted ball event with less than a 0 degree launch angle
- Ground Ball:** A batted ball event with a launch angle between 0 and 6 degrees
- Low Line Drive:** A batted ball event with a launch angle between 6 and 15 degrees
- High Line Drive:** A batted ball event with a launch angle between 15 and 24 degrees
- Fly Ball:** A batted ball event with a launch angle between 24 and 50 degrees
- Pop Up:** A batted ball event with a launch angle greater than 50 degrees