

# GATEWAY REGENSBURG

## 2023

### Pavel JOZEK #51

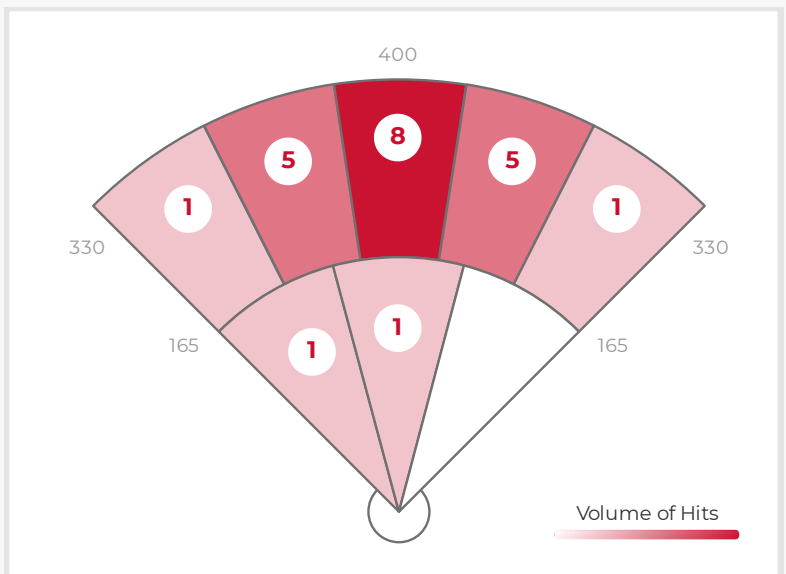
DATA

	AVG	MAX	HARD HIT AVG
E. VELOCITY	80.1	86.9	81.2
L. ANGLE	21.0	38.4	21.2
DIRECTION	0.4°L	31.7°R	0.1°L
DISTANCE	232	324	234
SPIN RATE	1892	3469	1881

BATTING AVG.	.409
XWOBA	.381
SLUGGING	.409
HARD HIT %	81.8%
BOMBS %	50.0%
ROPES %	22.7%

RAPSCORE

**R20**  
PRO  
**R50**  
HIGH SCHOOL



ZONE BREAKDOWN

Zone	Volume of Hits	AVG LA	AVG EV	AVG RPM	AVG Distance
PULL	6/22	24	79	2384	255
MIDDLE	11/22	19	80	1490	218
OPPO	5/22	21	80	2187	236

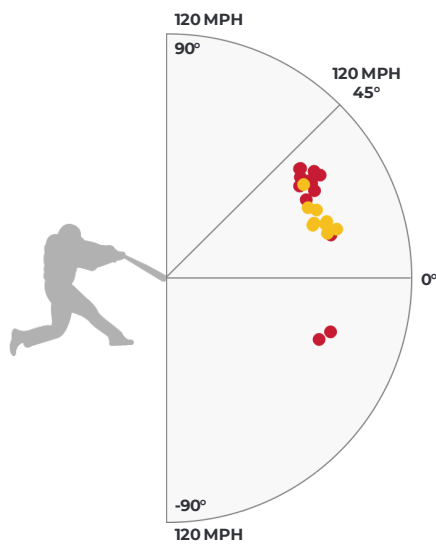
**HIT OUTCOME**

Single	Double	Triple	Homerun	Field Out	Foul Ball
40.9%	0%	0%	0%	59.1%	0%

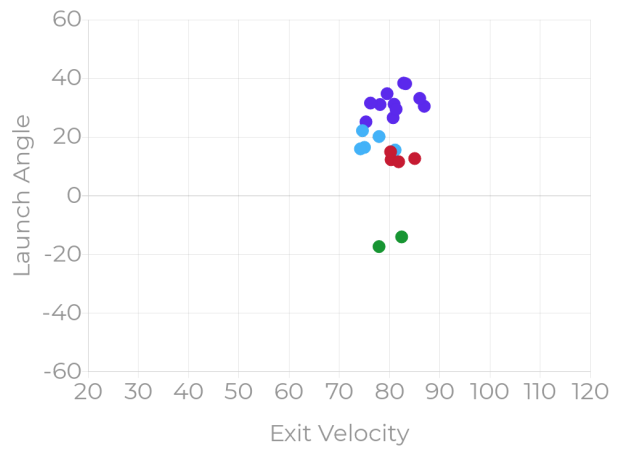
**HIT CLASSIFICATION**

Dribbler	Ground Ball	Low Line Drive	High Line Drive	Fly Ball	Pop Up
9.1%	0%	18.2%	22.7%	50.0%	0%

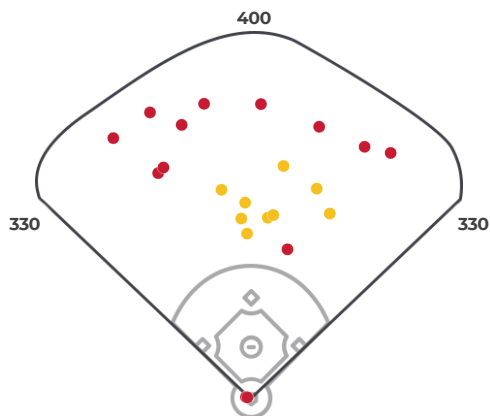
**HIT OUTCOME VS LA & EV**



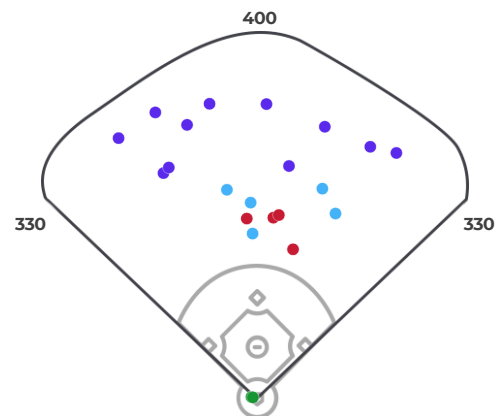
**HIT CLASSIFICATIONS VS LA & EV**



**HIT OUTCOME**



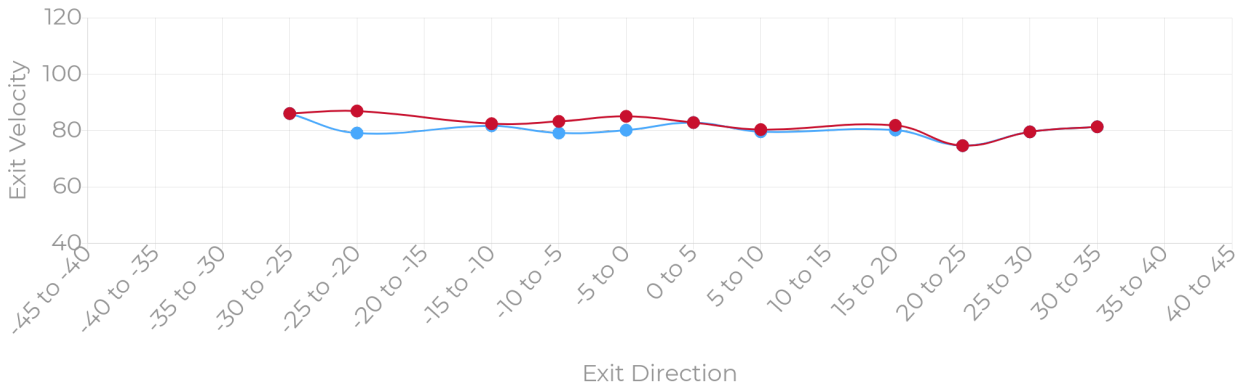
**HIT CLASSIFICATION**



● MAX ● AVG

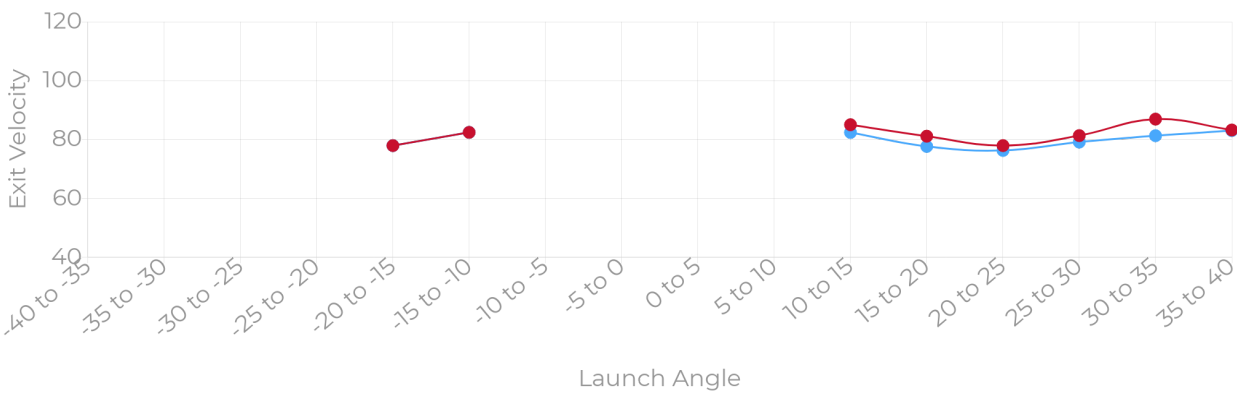
**MAX EV, AVG EV BY EXIT DIRECTION**

*Exit velocities are shown for all balls in play within the listed exit direction ranges.*



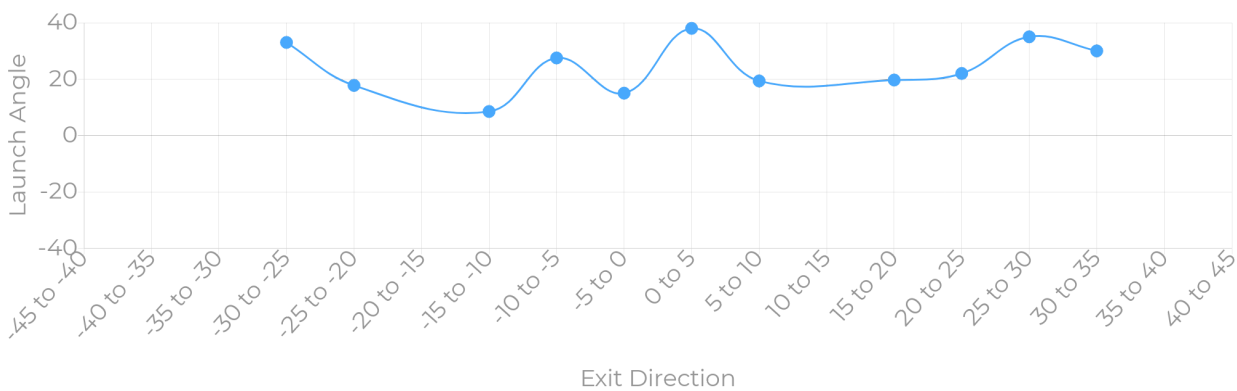
**MAX EV, AVG EV BY LAUNCH ANGLE**

*Exit velocities are shown for all balls in play within the listed launch angle ranges.*



**LAUNCH ANGLE BY EXIT DIRECTION**

*Average launch angles are shown for all balls in play within the listed exit direction ranges.*



**STRIKE ZONE BREAKDOWN**

**LAUNCH ANGLE**

**SPIN RATE**

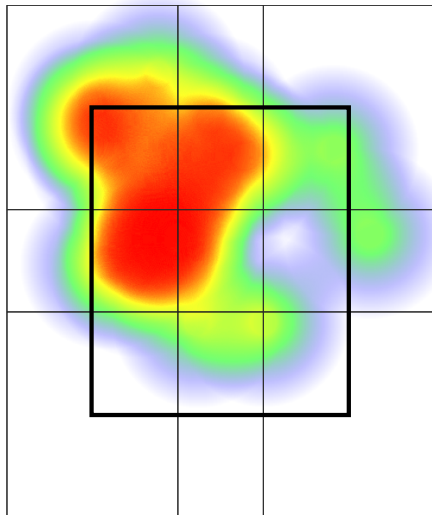
31.2 1/22	33.2 1/22	-17.3 1/22		
16.5 1/22	23.6 4/22	32.0 3/22	20.2 1/22	
	20.0 7/22			22.2 1/22
		12.3 1/22	12.7 1/22	

		Avg EV	Avg LA
HORIZONTAL	INNER THIRD	81.5	16.4
	MIDDLE THIRD	79.7	22.1
	OUTER THIRD	80.1	21.8
VERTICAL	UPPER THIRD	78.4	25.3
	MIDDLE THIRD	82.0	20.0
	LOWER THIRD	82.7	12.5

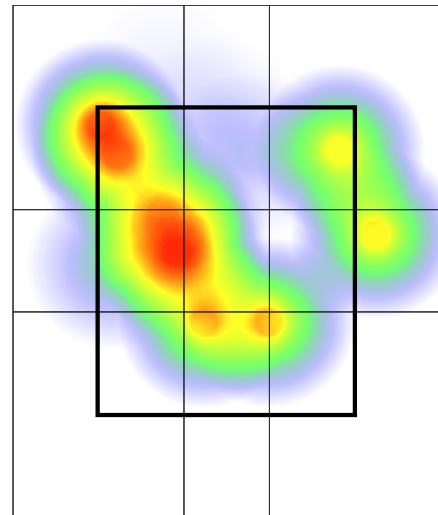
1555 1/22	3317 1/22	2127 1/22		
2268 1/22	1141 4/22	1790 3/22	3469 1/22	
	1923 7/22			3193 1/22
		1957 1/22	342 1/22	

**EXIT VELOCITY**

**XWOBA**



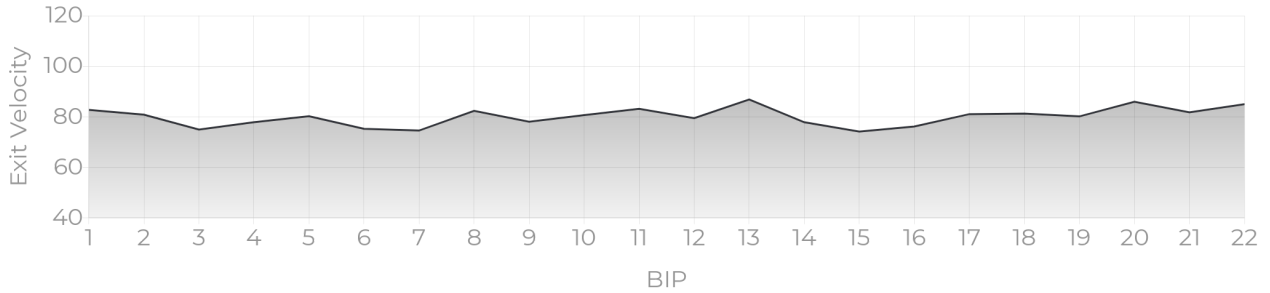
Catcher's POV



Catcher's POV

**PROGRESS REPORTS**

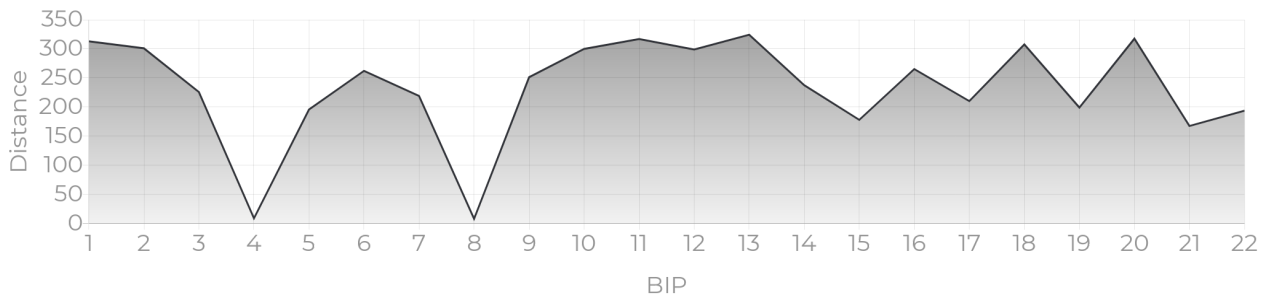
**EV TRACKER**



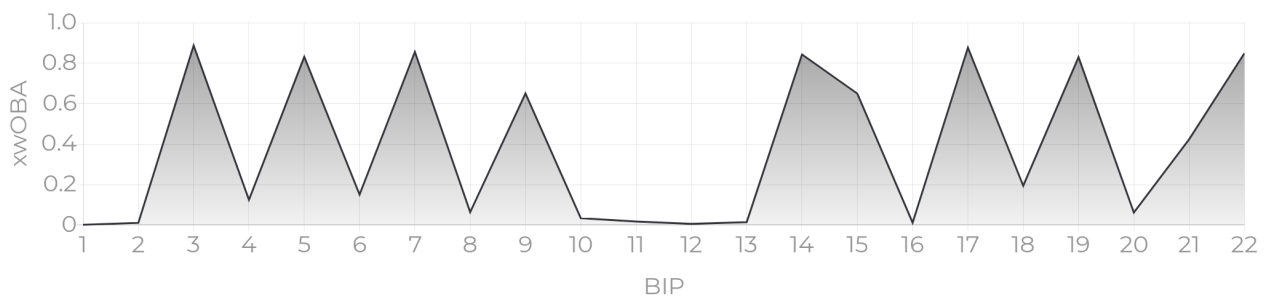
**LA TRACKER**



**DISTANCE TRACKER**



**XWOBA TRACKER**



## XWOBA

---

Expected Weighted On Base Average is a term commonly used inside of the MLB taking Launch Angle and Exit Velocity to determine the Expected OBA and often compared to the Actual OBA. This provides a tool for Rapsodo to provide an instant analysis of each BBE (Batted Ball Event). In the same way that each batted ball is assigned a Hit Classification, every batted ball has been given a single, double, triple and home run probability based on the results of comparable batted balls from MLB data — in terms of similar exit velocity and launch angle.

## BIP (BALL IN PLAY)

---

Any ball hit within a range of -45 to 45 degree Exit Direction.

## HARD HIT %

---

Any ball hit within 12.5% of a player's Max Exit Velo.

## ROPES

---

Any Hard Hit Ball (within 12.5% of a player's Max Exit Velo) and hit between 10 and 20 degree Launch Angle.

## BOMBS

---

Any Hard Hit Ball (within 12.5% of a player's Max Exit Velo) and Hit with a 20+ Launch Angle.

## HIT CLASSIFICATION

---

- Dribbler:** A batted ball event with less than a 0 degree launch angle
- Ground Ball:** A batted ball event with a launch angle between 0 and 6 degrees
- Low Line Drive:** A batted ball event with a launch angle between 6 and 15 degrees
- High Line Drive:** A batted ball event with a launch angle between 15 and 24 degrees
- Fly Ball:** A batted ball event with a launch angle between 24 and 50 degrees
- Pop Up:** A batted ball event with a launch angle greater than 50 degrees